



29 Victoria Road, Birmingham, B27 7XZ

Asking Price £599,950



5



2

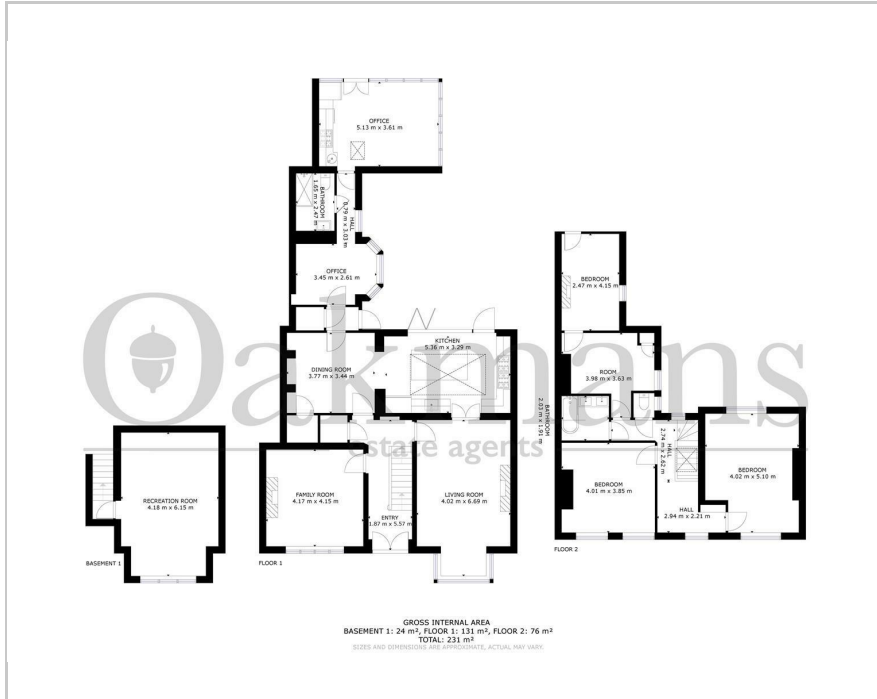


3

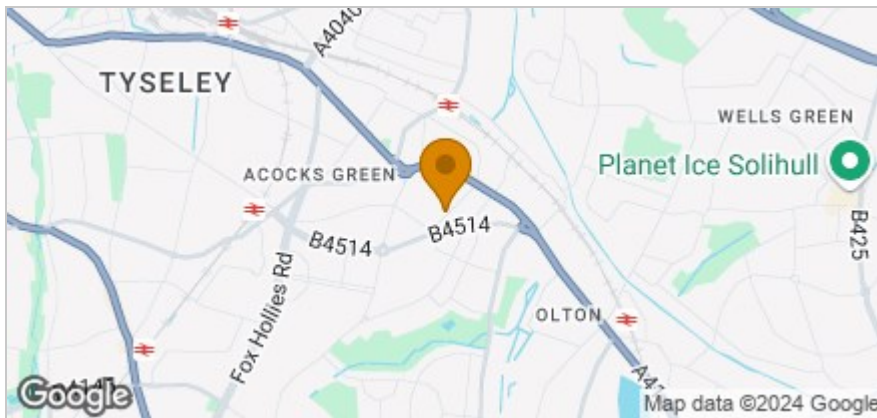


D

Floor Plan



Area Map



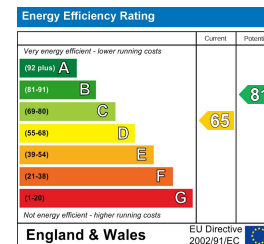
Accommodation

- DECEPTIVELY SPACIOUS
- FIVE BEDROOMS
- THREE RECEPTION ROOMS
- OFFICE / STUDY
- CINEMA ROOM
- STUNNING REAR GARDEN
- DRIVEWAY TO FRONT
- MUST BE VIEWED!!
- BEAUTIFULLY PRESENTED
- FANTASTIC LOCATION

Viewing

Please contact our Shirley Office on 0121 468 3234 if you wish to arrange a viewing appointment for this property or require further information.

Energy Efficiency Graph



These particulars, whilst believed to be accurate are set out as a general outline only for guidance and do not constitute any part of an offer or contract. Intending purchasers should not rely on them as statements of representation of fact, but must satisfy themselves by inspection or otherwise as to their accuracy. No person in this firm's employment has the authority to make or give any representation or warranty in respect of the property.