

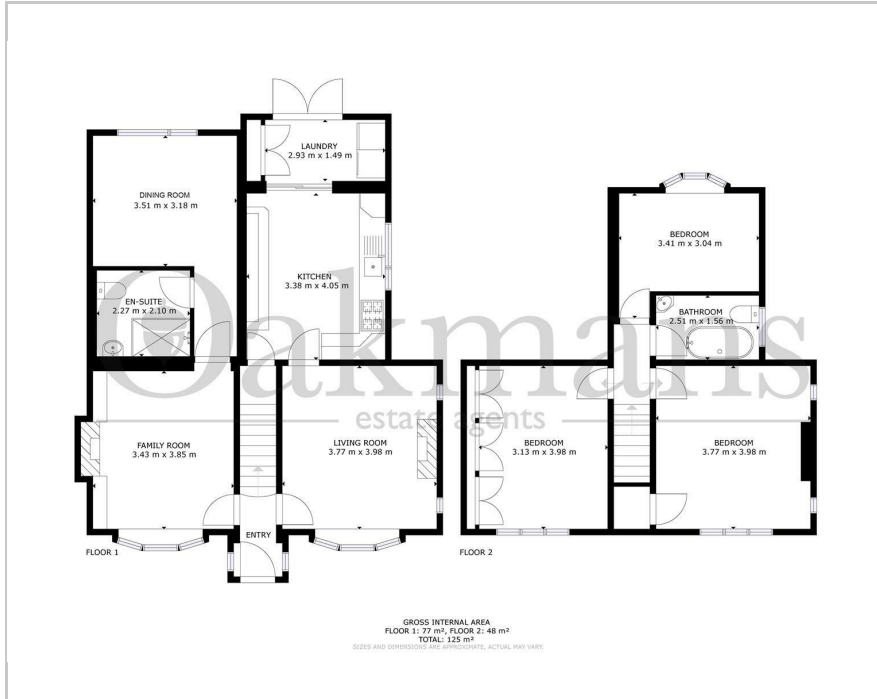


1156 (Yardley Wood Cottage) Yardley Wood Road, Birmingham, B14 4LD

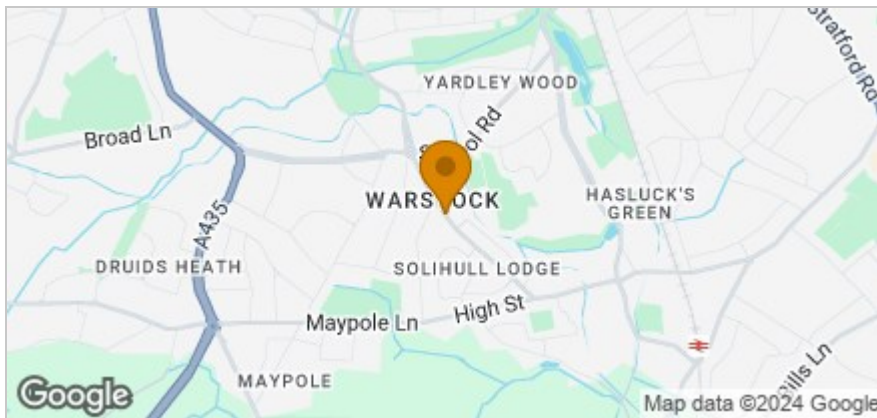
£500,000



## Floor Plan



## Area Map



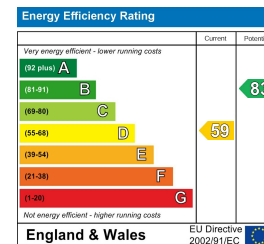
## Accommodation

- FOUR BEDROOM DETACHED COTTAGE
- BEAUTIFUL FAMILY HOME
- HIGHLY SOUGHT AFTER LOCATION
- OFFROAD PARKING
- TWO GARAGES
- POTENTIAL TO EXTEND (SUBJECT TO PLANNING PERMISSIONS)
- ENSUITE TO DOWNSTAIRS BEDROOM
- VIEWING HIGHLY RECOMMENDED

## Viewing

Please contact our Shirley Office on 0121 468 3234 if you wish to arrange a viewing appointment for this property or require further information.

## Energy Efficiency Graph



These particulars, whilst believed to be accurate are set out as a general outline only for guidance and do not constitute any part of an offer or contract. Intending purchasers should not rely on them as statements of representation of fact, but must satisfy themselves by inspection or otherwise as to their accuracy. No person in this firm's employment has the authority to make or give any representation or warranty in respect of the property.