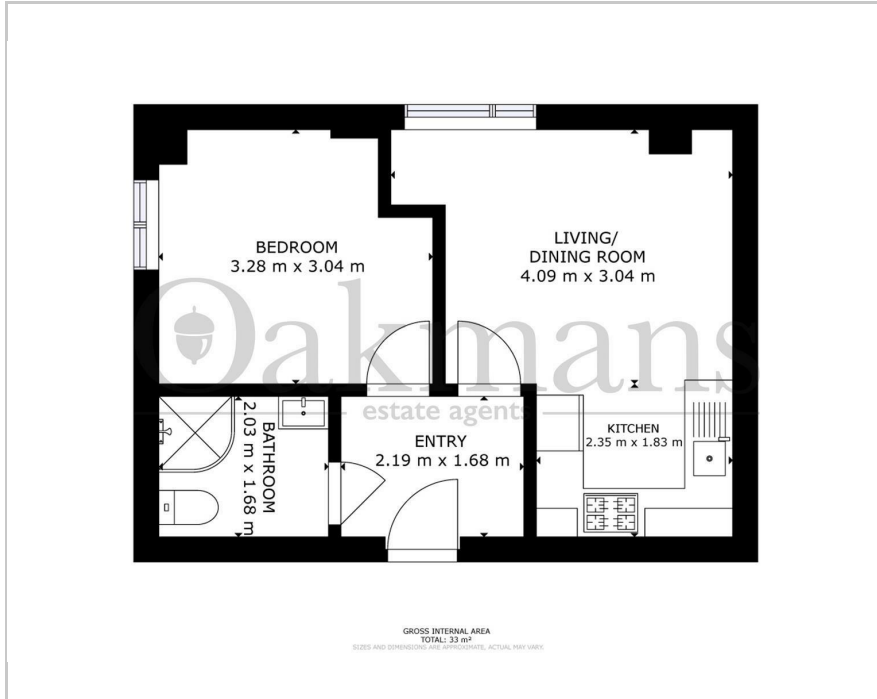


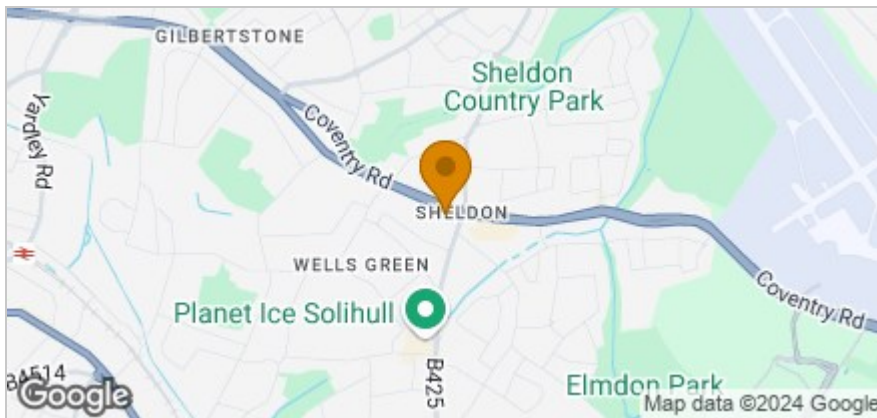


2309 Coventry Road, Birmingham, B26 3BW  
Offers In The Region Of £140,000

## Floor Plan



## Area Map



## Accommodation

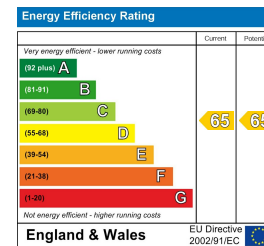
- THIRD FLOOR APARTMENT
- OPEN PLAN LOUNGE / KITCHEN
- DOUBLE BEDROOM
- FAMILY BATHROOM
- ALLOCATED PARKING SPACE
- IDEAL LOCATION



## Viewing

Please contact our Shirley Sales Office on 0121 468 3234 if you wish to arrange a viewing appointment for this property or require further information.

## Energy Efficiency Graph



These particulars, whilst believed to be accurate are set out as a general outline only for guidance and do not constitute any part of an offer or contract. Intending purchasers should not rely on them as statements of representation of fact, but must satisfy themselves by inspection or otherwise as to their accuracy. No person in this firm's employment has the authority to make or give any representation or warranty in respect of the property.