



14B Russell Road, Birmingham, B13 8RD,
£2,800 Per Month



5



4

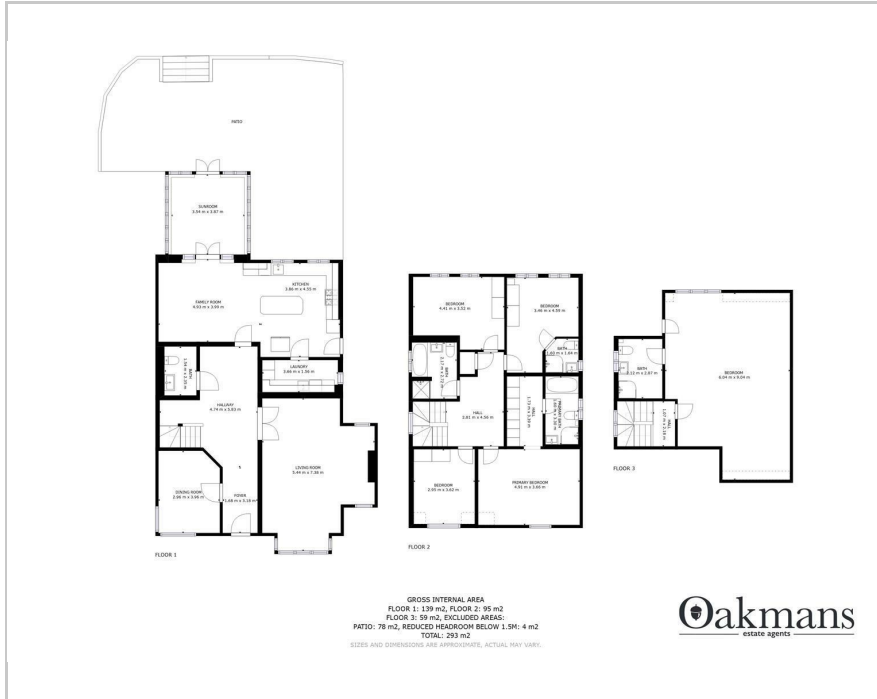


2



C

Floor Plan



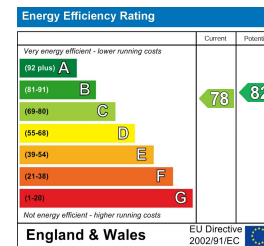
Accommodation

- 0.20 Acres Plot Size
- Fantastic Location
- Near To Cannon Hill Park
- Utility Room
- Family Bathroom & Three En-Suites
- Garage Converted In To Gym
- Conservatory
- Modern Throughout
- Downstairs W/C
- Open Plan Modern Kitchen Diner

Viewing

Please contact our Shirley Office on if you wish to arrange a viewing appointment for this property or require further information.

Energy Efficiency Graph



Area Map



These particulars, whilst believed to be accurate are set out as a general outline only for guidance and do not constitute any part of an offer or contract. Intending purchasers should not rely on them as statements of representation of fact, but must satisfy themselves by inspection or otherwise as to their accuracy. No person in this firm's employment has the authority to make or give any representation or warranty in respect of the property.

342-344 Stratford Road Shirley, Solihull, B90 3DW
 Tel: Email: <https://oakmans.co.uk/>