



26 Newborough Grove, Birmingham, B28 0UX
Offers In The Region Of £294,000



3



1

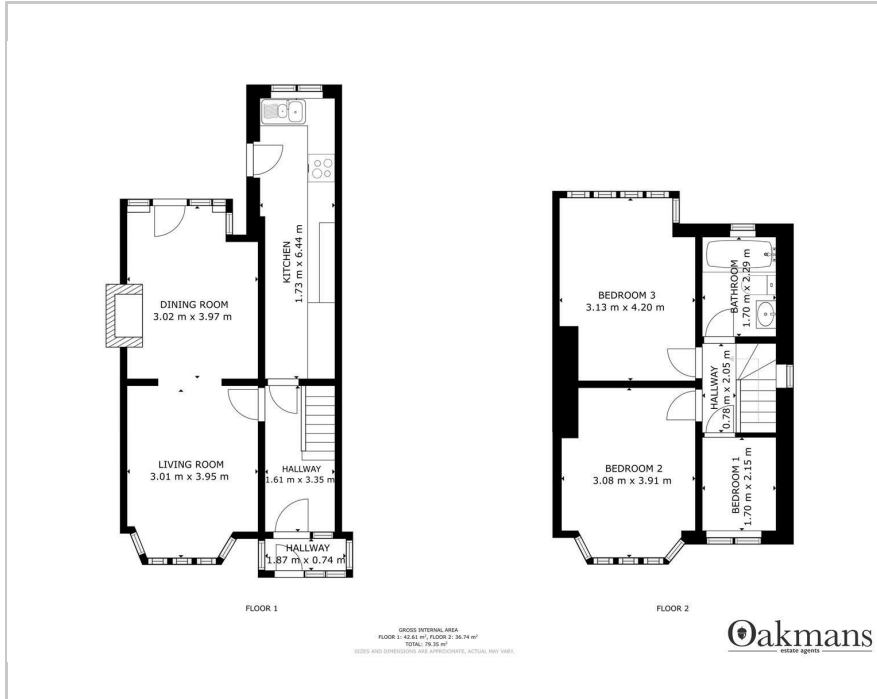


2



D

Floor Plan



Area Map



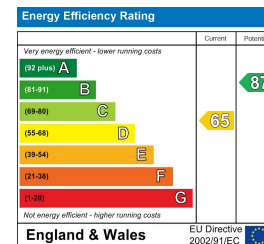
Accommodation

- SEMI DETACHED PROPERTY
- THROUGH LOUNGE / DINER
- FITTED KITCHEN
- THREE BEDROOMS
- FAMILY BATHROOM
- GOOD SIZED REAR GARDEN
- DRIVEWAY PARKING
- NO UPWARD CHAIN

Viewing

Please contact our Shirley Office on 0121 468 3234 if you wish to arrange a viewing appointment for this property or require further information.

Energy Efficiency Graph



These particulars, whilst believed to be accurate are set out as a general outline only for guidance and do not constitute any part of an offer or contract. Intending purchasers should not rely on them as statements of representation of fact, but must satisfy themselves by inspection or otherwise as to their accuracy. No person in this firm's employment has the authority to make or give any representation or warranty in respect of the property.

342-344 Stratford Road Shirley, Solihull, B90 3DW

Tel: 0121 468 3234 Email: shirley@oakmans.co.uk www.oakmans.co.uk