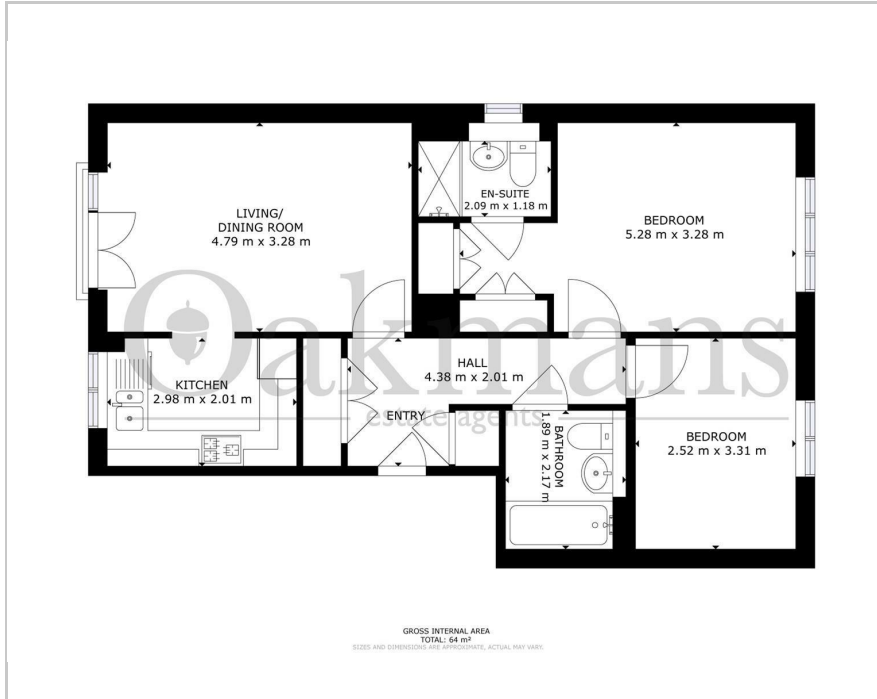




10 Beech House, Fulford Close, Birmingham, B47 6HJ
Offers Over £195,000

Floor Plan



Area Map



Accommodation

- RECENTLY REFURBISHED TWO BEDROOM APARTMENT
- NEW BATHROOM & EN SUITE TO MASTER
- MODERN AND WELL PRESENTED THROUGHOUT
- HIGHLY SOUGHT AFTER WYTHALL LOCATION
- IDYLIC VIEWS OVER NEARBY FIELDS
- FIRST FLOOR
- ALLOCATED PARKING SPACE
- NO UPWARD CHAIN
- CALL OAKMANS TODAY!

Viewing

Please contact our Shirley Office on 0121 468 3234 if you wish to arrange a viewing appointment for this property or require further information.

Energy Efficiency Graph

Energy Efficiency Rating		Current	Potential
Very energy efficient - lower running costs			
(92 plus)	A		
(81-91)	B		
(69-80)	C		
(55-68)	D		
(39-54)	E		
(21-38)	F		
(1-20)	G		
Not energy efficient - higher running costs			
England & Wales		EU Directive 2002/91/EC	



These particulars, whilst believed to be accurate are set out as a general outline only for guidance and do not constitute any part of an offer or contract. Intending purchasers should not rely on them as statements of representation of fact, but must satisfy themselves by inspection or otherwise as to their accuracy. No person in this firm's employment has the authority to make or give any representation or warranty in respect of the property.