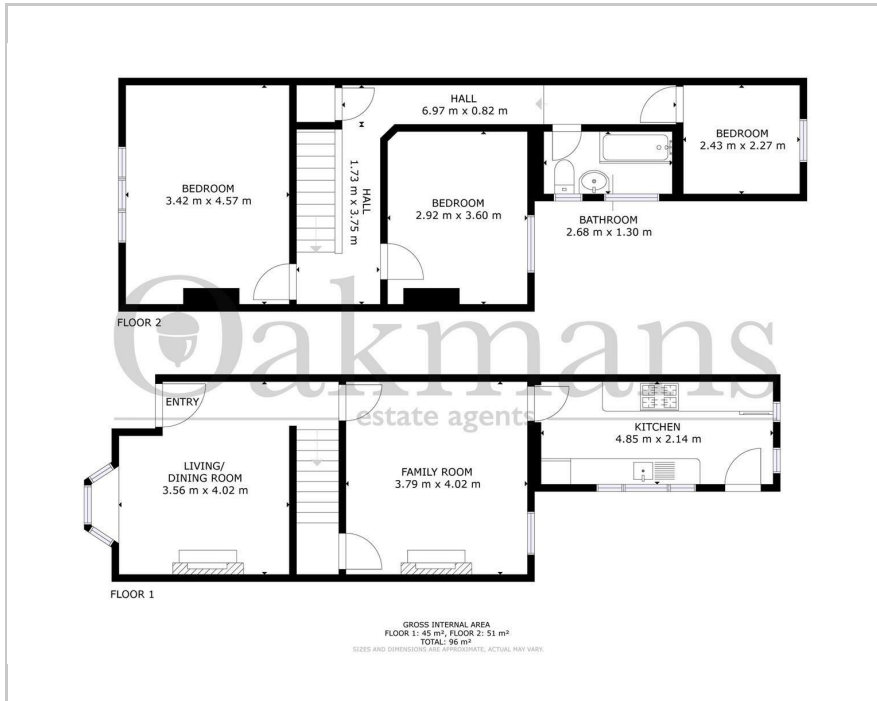




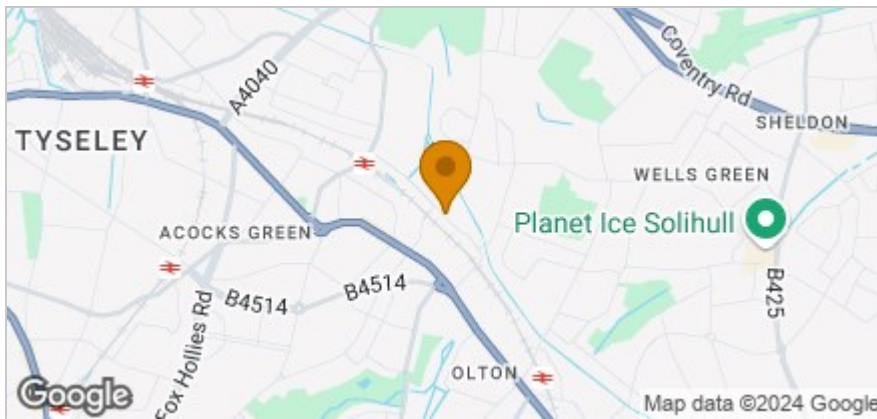
175 The Avenue, Birmingham, B27 6NP  
Offers Over £235,000



## Floor Plan



## Area Map



## Accommodation

- BEAUTIFUL MID TERRACE HOUSE
- NO ONWARD CHAIN
- MODERN FITTED KITCHEN
- TWO RECEPTION ROOMS
- FAMILY BATHROOM
- POPULAR LOCATION
- IDYLIC REAR GARDEN
- IDEAL FIRST TIME PURCHASE/BUY TO LET INVESTMENT
- THREE GOOD SIZE BEDROOMS
- CALL OAKMANS TODAY!

## Viewing

Please contact our Shirley Office on 0121 468 3234 if you wish to arrange a viewing appointment for this property or require further information.

## Energy Efficiency Graph



These particulars, whilst believed to be accurate are set out as a general outline only for guidance and do not constitute any part of an offer or contract. Intending purchasers should not rely on them as statements of representation of fact, but must satisfy themselves by inspection or otherwise as to their accuracy. No person in this firm's employment has the authority to make or give any representation or warranty in respect of the property.

342-344 Stratford Road Shirley, Solihull, B90 3DW

Tel: 0121 468 3234 Email: shirley@oakmans.co.uk www.oakmans.co.uk