

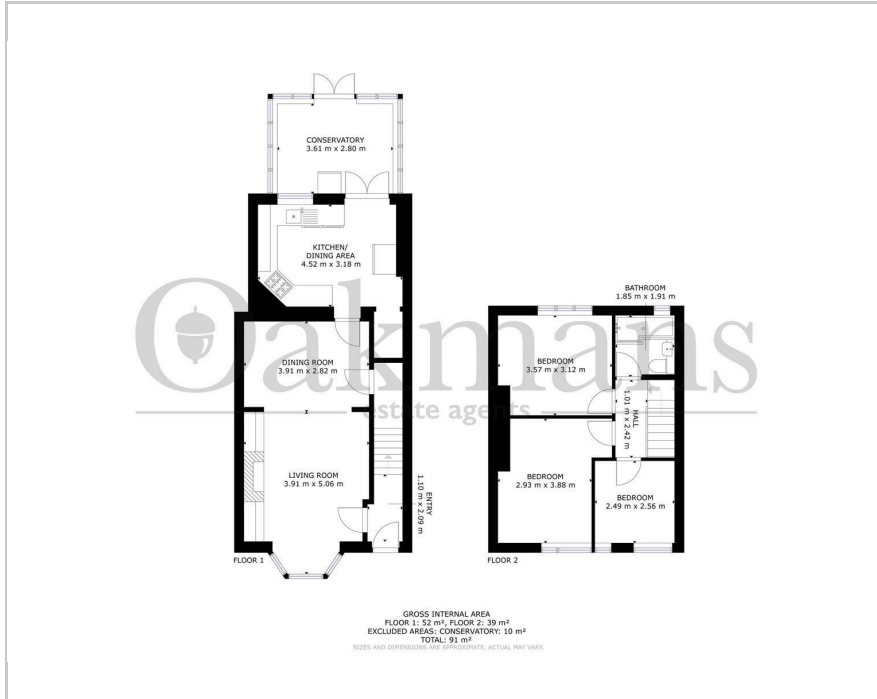


111 Sladepool Farm Road, Birmingham, B14 5EA

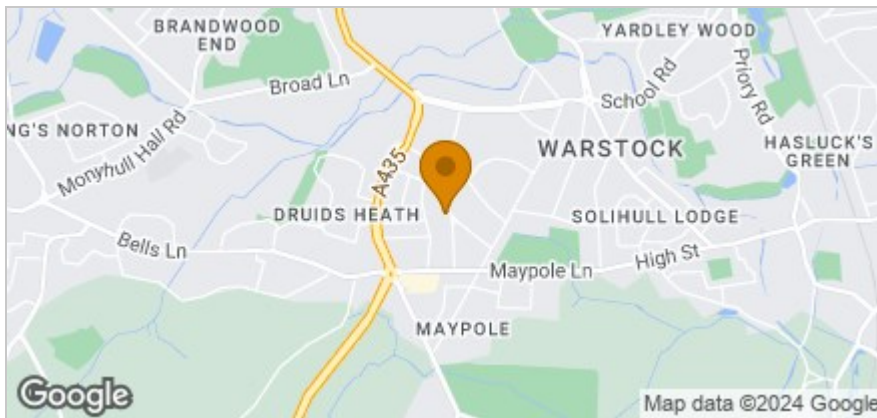
£250,000



## Floor Plan



## Area Map



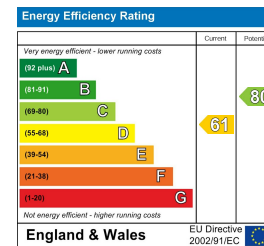
## Accommodation

- No Upward Chain
- Immaculately Presented
- Three Bedrooms
- Modern Bathroom
- Large Open Plan Lounge Diner
- Conservatory
- Double Driveway
- Rear Extension
- Private Rear Garden

## Viewing

Please contact our Shirley Office on if you wish to arrange a viewing appointment for this property or require further information.

## Energy Efficiency Graph



These particulars, whilst believed to be accurate are set out as a general outline only for guidance and do not constitute any part of an offer or contract. Intending purchasers should not rely on them as statements of representation of fact, but must satisfy themselves by inspection or otherwise as to their accuracy. No person in this firm's employment has the authority to make or give any representation or warranty in respect of the property.