



200 Lyndon Road, Solihull, B92 7QQ
Offers Over £450,000



5



1

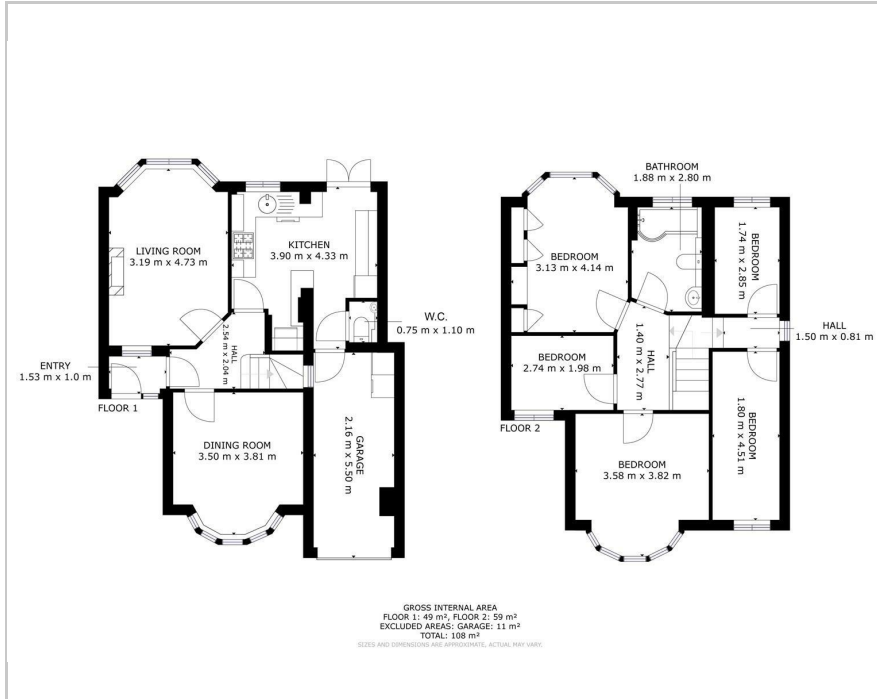


1

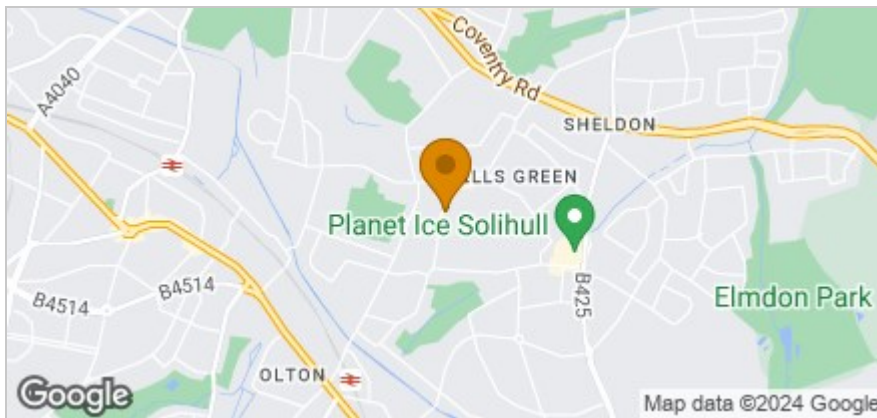


D

Floor Plan



Area Map



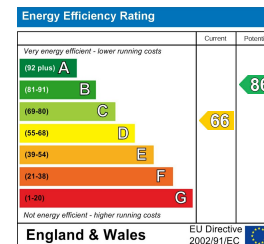
Accommodation

- LARGER STYLE SEMI DETACHED
- TWO RECEPTION ROOMS
- KITCHEN / DINER
- DOWNSTAIRS WC
- GARAGE
- FIVE BEDROOMS
- FAMILY BATHROOM
- AMPLE DRIVEWAY PARKING
- BEAUTIFUL REAR GARDEN
- EXCELLENT LOCATION

Viewing

Please contact our Shirley Office on if you wish to arrange a viewing appointment for this property or require further information.

Energy Efficiency Graph



These particulars, whilst believed to be accurate are set out as a general outline only for guidance and do not constitute any part of an offer or contract. Intending purchasers should not rely on them as statements of representation of fact, but must satisfy themselves by inspection or otherwise as to their accuracy. No person in this firm's employment has the authority to make or give any representation or warranty in respect of the property.