

Oakmans

estate agents



94 Peterbrook Road, Solihull, B90 1EF

Offers Over £355,000

Oakmans

estate agents



2



1

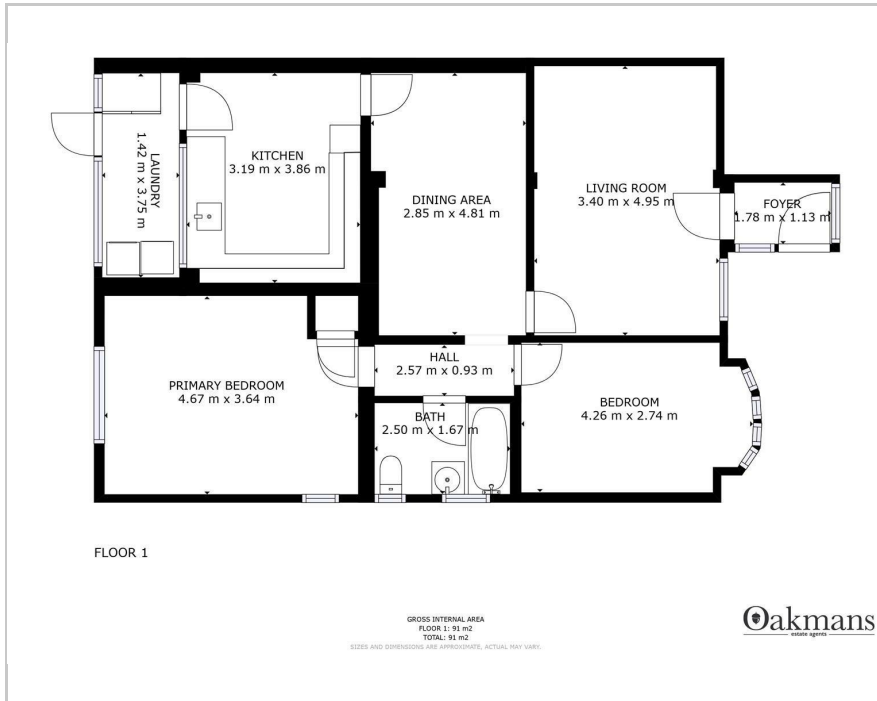


2

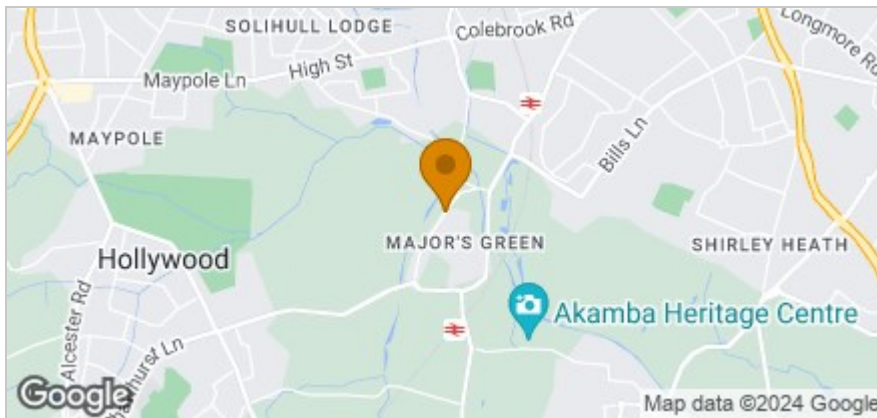


E

Floor Plan



Area Map



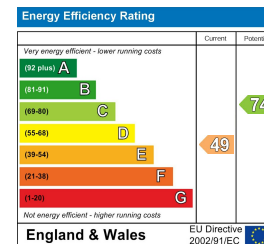
Accommodation

- DETACHED BUNGALOW
- PLANNING PERMISSION TO DEMOLISH & REBUILD 4 BED DORMER
- DEVELOPMENT OPPORTUNITY
- LARGE PLOT
- RURAL AREA
- DRIVEWAY FOR MULTIPLE VEHICLES
- PLANS / CGI'S AVAILABLE ON REQUEST
- VIEWING HIGHLY RECOMMENDED
- NEAR TO SHIRLEY TRAIN STATION
- NO UPWARD CHAIN

Viewing

Please contact our Shirley Office on if you wish to arrange a viewing appointment for this property or require further information.

Energy Efficiency Graph



These particulars, whilst believed to be accurate are set out as a general outline only for guidance and do not constitute any part of an offer or contract. Intending purchasers should not rely on them as statements of representation of fact, but must satisfy themselves by inspection or otherwise as to their accuracy. No person in this firm's employment has the authority to make or give any representation or warranty in respect of the property.