



6 Marian Croft, Birmingham, B26 3LZ
Offers Over £330,000



3



1

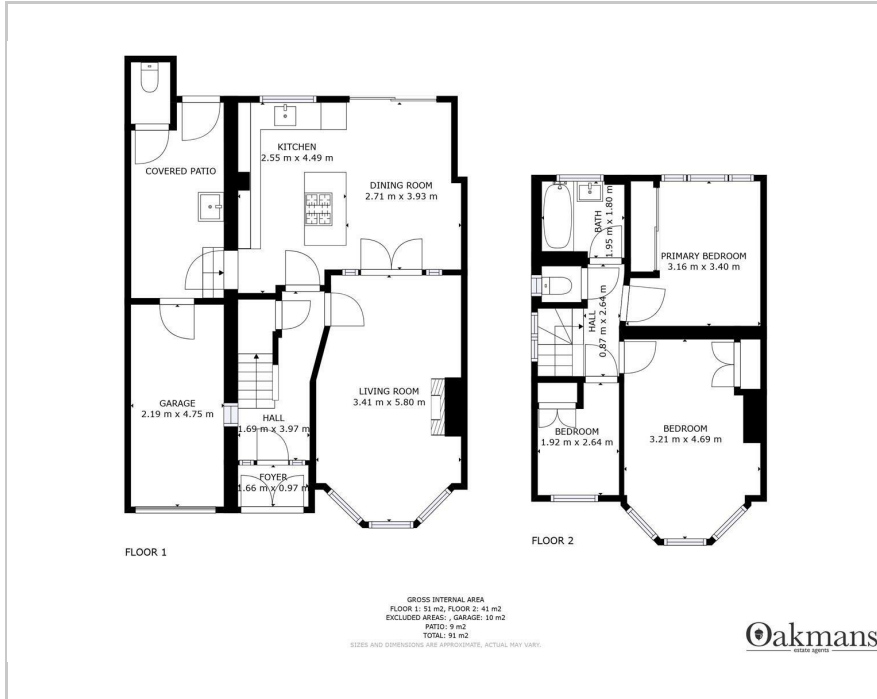


2

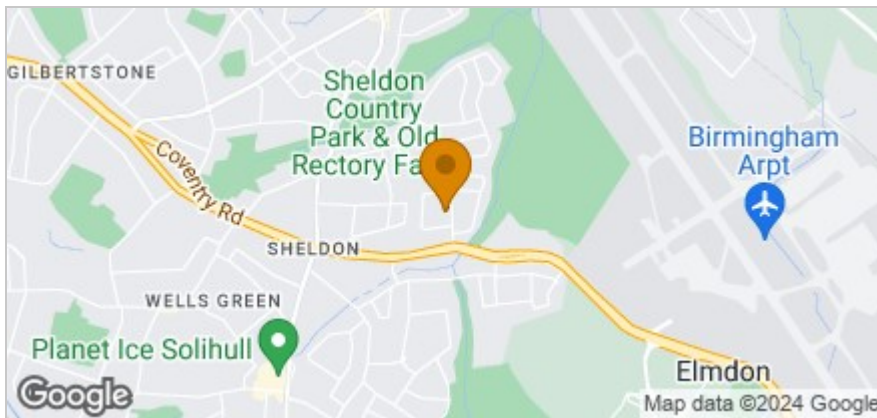


D

Floor Plan



Area Map



Accommodation

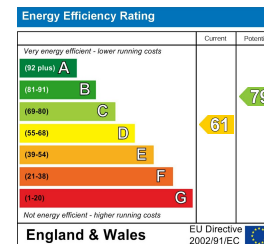
- NO UPWARD CHAIN
- REAR EXTENSION
- PLANNING FOR FURTHER TWO STOREY EXTENSION TO SIDE
- NEW ROOF
- CUL-DE-SAC LOCATION
- CALL OAKMANS TODAY



Viewing

Please contact our Shirley Office on if you wish to arrange a viewing appointment for this property or require further information.

Energy Efficiency Graph



These particulars, whilst believed to be accurate are set out as a general outline only for guidance and do not constitute any part of an offer or contract. Intending purchasers should not rely on them as statements of representation of fact, but must satisfy themselves by inspection or otherwise as to their accuracy. No person in this firm's employment has the authority to make or give any representation or warranty in respect of the property.

342-344 Stratford Road Shirley, Solihull, B90 3DW
 Tel: Email: <https://oakmans.co.uk/>