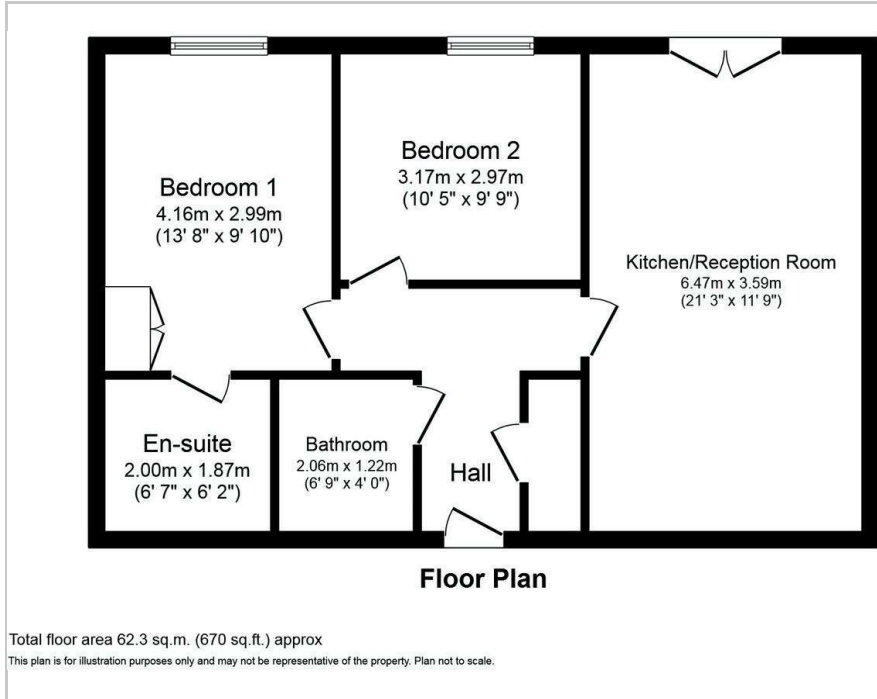


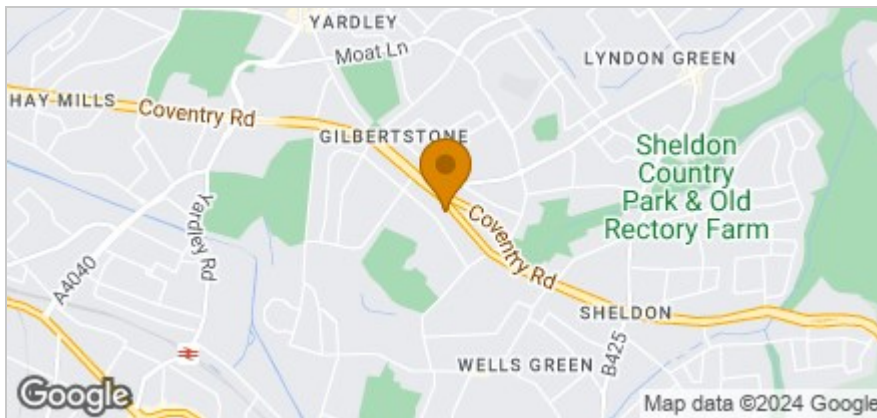


Flat 23 Solihull Heights New Coventry Road, Birmingham, B26 3BB
Offers Over £140,000

Floor Plan



Area Map



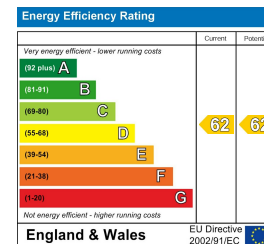
Accommodation

- Two Bedroom Apartment
- Two Bathroom
- No Upward Chain
- Ideal FTB / Investment Purchase
- Allocated Parking Space
- Excellent transport links
- Call Oakmans Today
- Leasehold

Viewing

Please contact our Shirley Office on if you wish to arrange a viewing appointment for this property or require further information.

Energy Efficiency Graph



These particulars, whilst believed to be accurate are set out as a general outline only for guidance and do not constitute any part of an offer or contract. Intending purchasers should not rely on them as statements of representation of fact, but must satisfy themselves by inspection or otherwise as to their accuracy. No person in this firm's employment has the authority to make or give any representation or warranty in respect of the property.