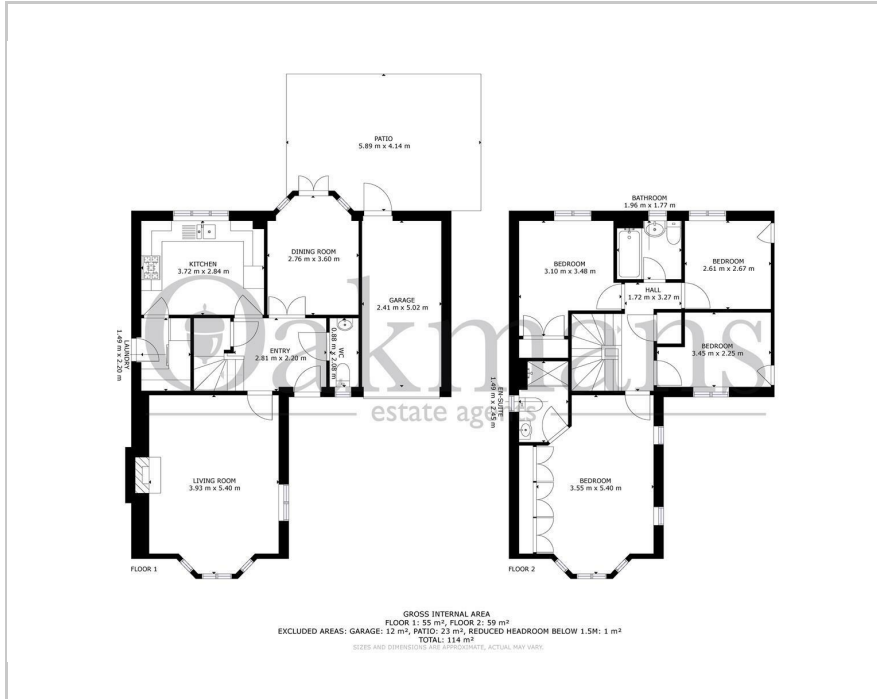


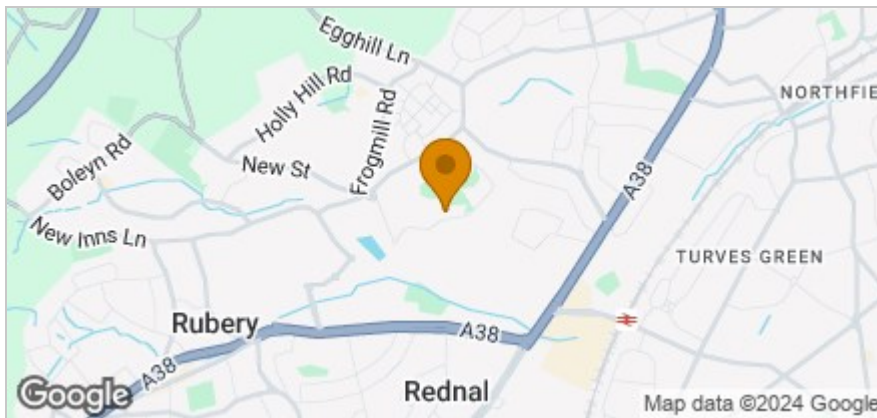


7 Elm Drive, Birmingham, B31 5JQ  
Offers In The Region Of £415,000

## Floor Plan



## Area Map



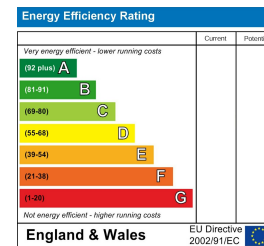
## Accommodation

- FOUR GENEROUSLY SIZED BEDROOMS
- PRIVATE REAR GARDEN
- TWO BATHROOMS
- AMPLE PARKING TO FRONT
- CALL OAKMANS TODAY!
- WALKING DISTANCE TO LOCAL AMENITIES
- CLOSE TO LONGBRIDGE TOWN CENTRE
- GARAGE
- EXCELLENT LOCATION

## Viewing

Please contact our Northfield Office on 0121 468 3232 if you wish to arrange a viewing appointment for this property or require further information.

## Energy Efficiency Graph



These particulars, whilst believed to be accurate are set out as a general outline only for guidance and do not constitute any part of an offer or contract. Intending purchasers should not rely on them as statements of representation of fact, but must satisfy themselves by inspection or otherwise as to their accuracy. No person in this firm's employment has the authority to make or give any representation or warranty in respect of the property.

899-901 Bristol Road South, Birmingham, B31 2PA

Tel: 0121 468 3232 Email: northfield@oakmans.co.uk www.oakmans.co.uk