



25 Woodcock Lane, Birmingham, B31 1BA
Offers In The Region Of £325,000



3



1

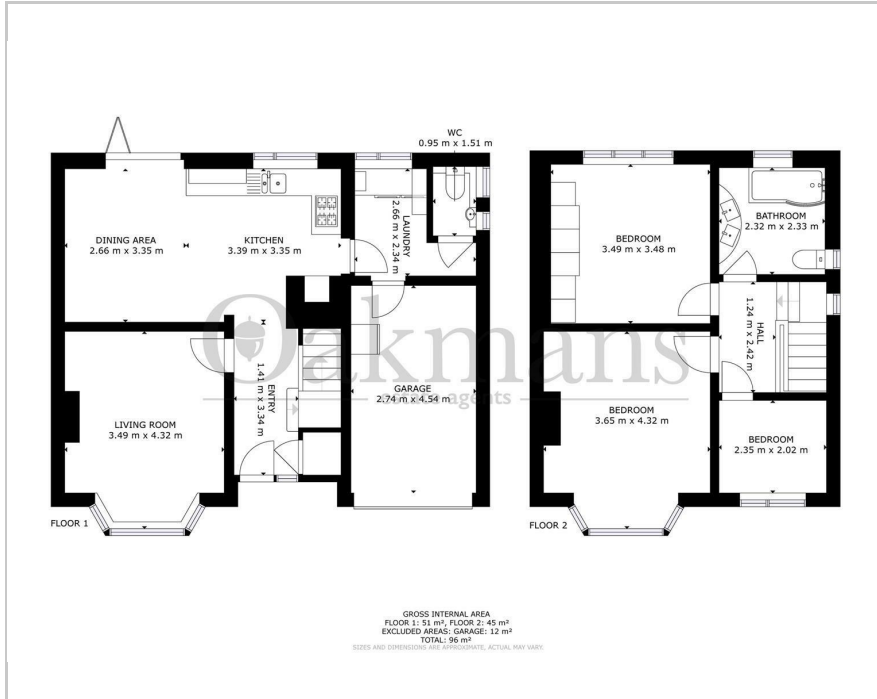


1

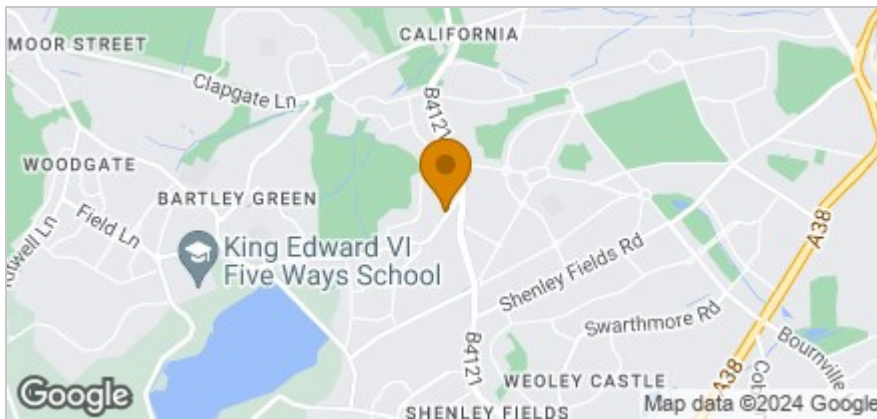


C

Floor Plan



Area Map



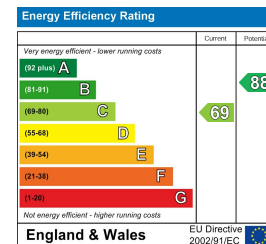
Accommodation

- Three Bedroom Semi Detached Property
- Kitchen/Diner
- Lounge
- Utility Room
- Downstairs W/C
- Garage
- Off Road Parking
- Great Location
- Beautiful Garden
- Close to Local Amenities

Viewing

Please contact our Northfield Office on if you wish to arrange a viewing appointment for this property or require further information.

Energy Efficiency Graph



These particulars, whilst believed to be accurate are set out as a general outline only for guidance and do not constitute any part of an offer or contract. Intending purchasers should not rely on them as statements of representation of fact, but must satisfy themselves by inspection or otherwise as to their accuracy. No person in this firm's employment has the authority to make or give any representation or warranty in respect of the property.