



19 Cofton Court, Birmingham, B45 8XR  
Offers Over £218,000



2



1

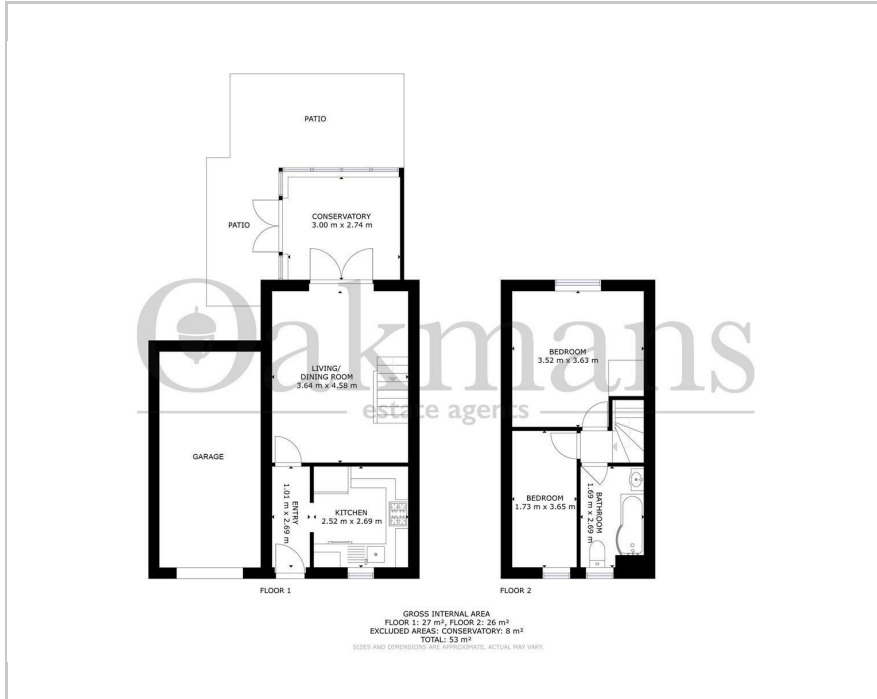


1

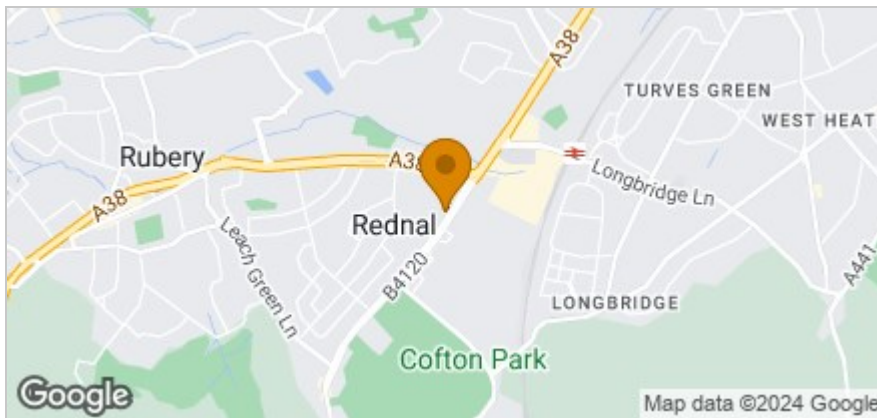




## Floor Plan



## Area Map



## Accommodation

- Two Bedroom Semi
- Large Corner Plot
- Brand New Kitchen
- Lounge
- Car Port
- Conservatory
- Walking Distance to Longbridge Town Centre
- Close to Amenities
- Close to Transport Links

## Viewing

Please contact our Northfield Office on if you wish to arrange a viewing appointment for this property or require further information.

## Energy Efficiency Graph



These particulars, whilst believed to be accurate are set out as a general outline only for guidance and do not constitute any part of an offer or contract. Intending purchasers should not rely on them as statements of representation of fact, but must satisfy themselves by inspection or otherwise as to their accuracy. No person in this firm's employment has the authority to make or give any representation or warranty in respect of the property.