



104 New House Farm Drive, Birmingham, B31 2FX
Offers Over £699,000



4



3

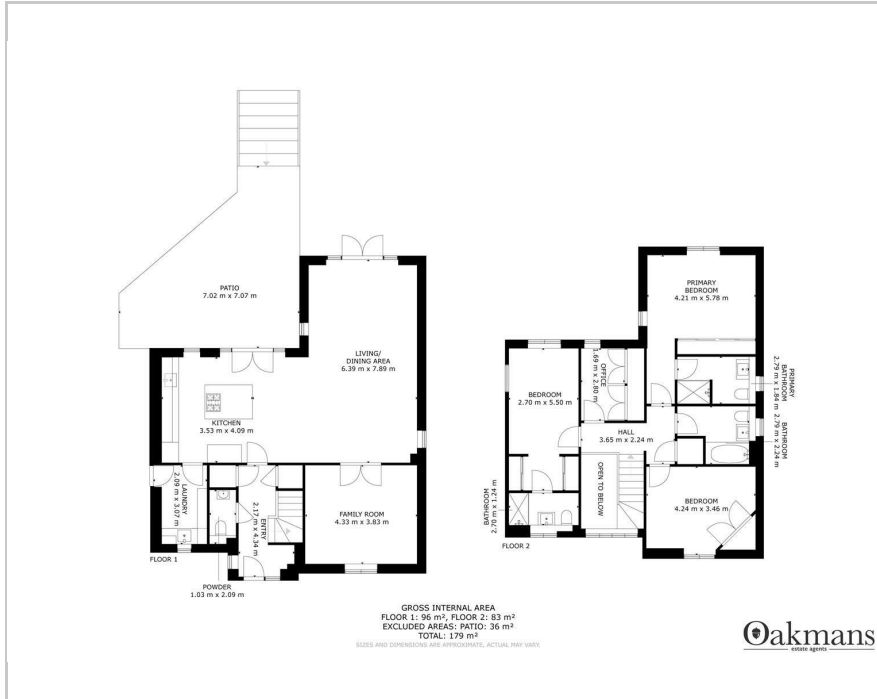


2



B

Floor Plan



Area Map



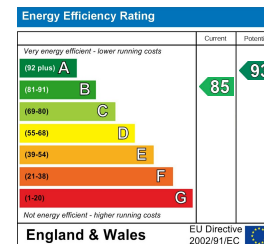
Accommodation

- Please View Video Trailer
- Immaculately Presented Throughout
- Near to Royal Orthopaedic Hospital
- Near To Queen Elizabeth Hospital
- Near To University of Birmingham
- Converted Double Garage
- High Upgraded Specification Throughout
- Beautifully Positioned
- Located within desirable Bournville Village Trust Estate
- Must Be Viewed

Viewing

Please contact our Northfield Office on if you wish to arrange a viewing appointment for this property or require further information.

Energy Efficiency Graph



These particulars, whilst believed to be accurate are set out as a general outline only for guidance and do not constitute any part of an offer or contract. Intending purchasers should not rely on them as statements of representation of fact, but must satisfy themselves by inspection or otherwise as to their accuracy. No person in this firm's employment has the authority to make or give any representation or warranty in respect of the property.