



Amhurst Road, E8
£725,000

Dexters



Amhurst Road, E8

A two double bedroom split level Victorian conversion measuring over 1,000 sq ft in the heart of Hackney. Set across the top two floors, the property has been completely refurbished throughout with a sleek open plan kitchen & island, engineered wood flooring, two modern bathrooms and double glazed sash windows. Additionally there are two useful office spaces on each landing. It is being sold chain free and with a Share of the Freehold.

Set across the top two floors, the property has been completely refurbished throughout with a sleek open plan kitchen & island, engineered wood flooring, two modern bathrooms and double glazed sash windows.

Additionally there are two useful office spaces on each landing. It is being sold chain free and with a Share of the Freehold.

There is an additional 250 sq ft of eaves storage which is rare for any Victorian conversion.

The property is surrounded by a plethora of cafés, restaurants and shops in nearby Dalston, Mare Street, Shacklewell Lane & Wilton Way. The property is less than half a mile to Hackney Downs & Hackney Central Stations offering direct transport links to the City and West End. Hackney Downs Park is 500 ft away and London Fields is half a mile away with tennis courts and its famous

Features

- Two Double Bedrooms
- Two Bathrooms
- Victorian
- Chain Free
- Share of Freehold
- Over 1,000 sq ft



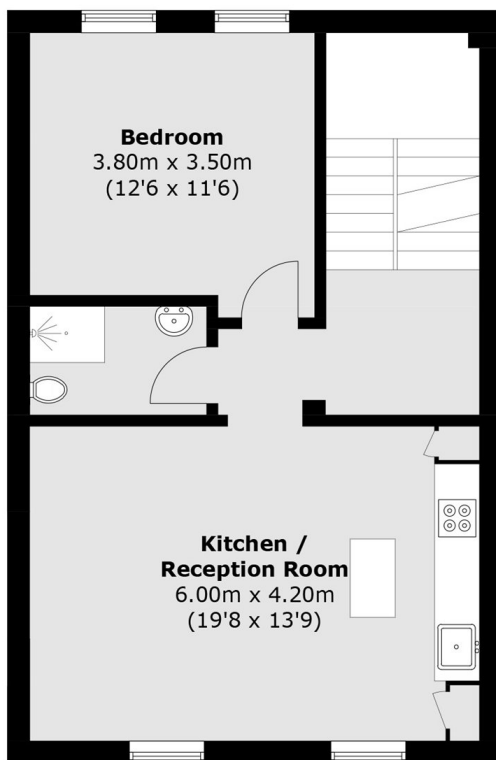




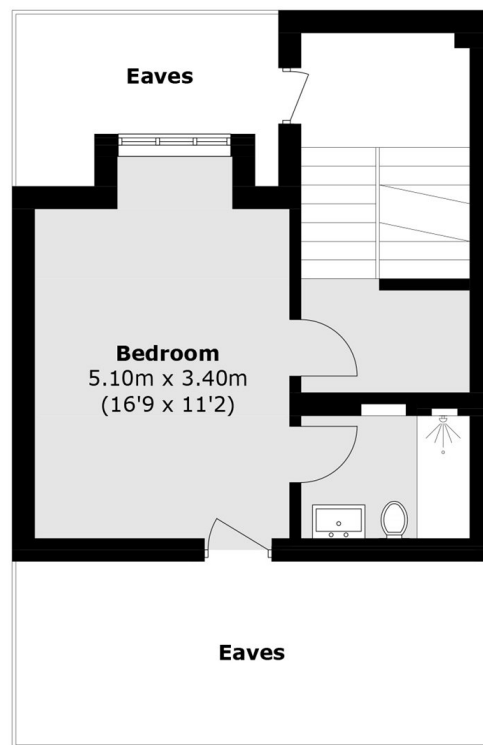
Amhurst Road, London, E8



Ground Floor



First Floor



Second Floor

Total area (approx.): 93.3 sq. m (1,004.2 sq. ft)
(Excluding Eaves)