



## Mare Street, E8

### £475,000

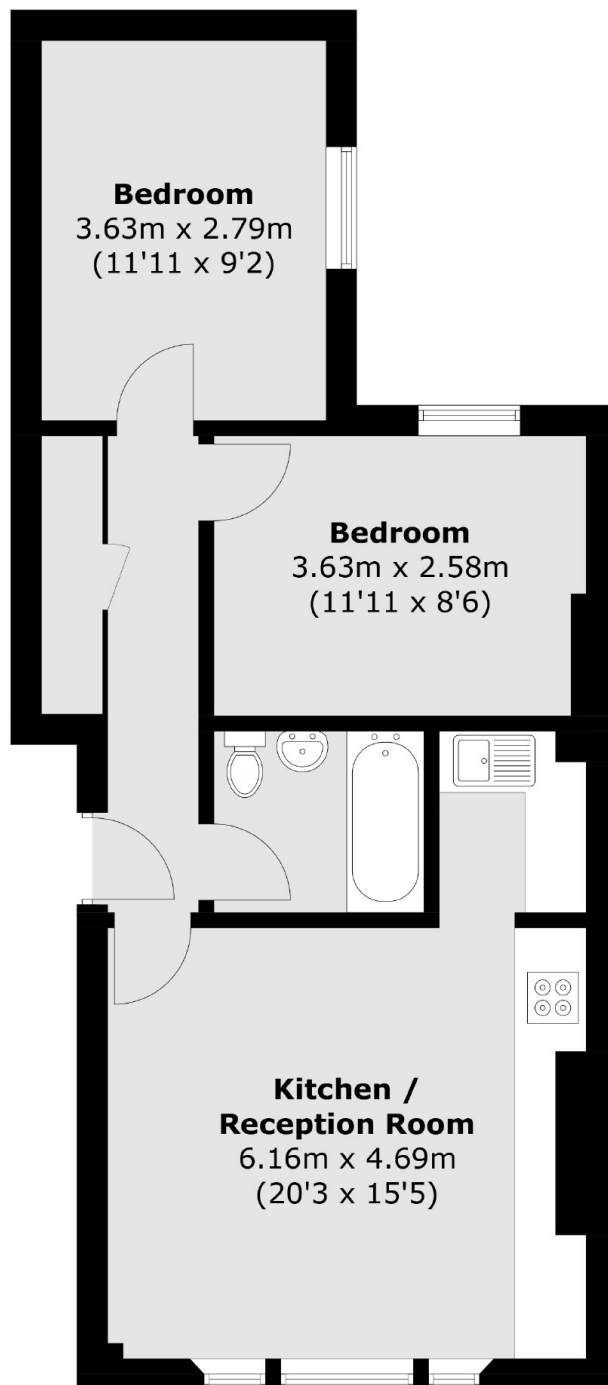
A two double bedroom period conversion on the pedestrianised Mare Street. The property benefits from open plan kitchen/living area, high ceilings, sash windows and large modern bathroom. It is being sold with a new long lease and no onward chain.

Centrally located with transport and shops in very close proximity. The property is a quarter of a mile to Hackney Central & Hackney Downs station offering direct access into Liverpool Street and many local bars, restaurants and high street shops are on your door-step.

### Features

- Offers Over
- Two Double Bedrooms
- Victorian Conversion
- New Long Lease
- High Ceilings
- Chain Free
- Close To Transport

# Mare Street, London, E8



Total area (approx.): 55.6 sq. m (598.5 sq. ft)