



## Homerton Row, E9

### £550,000

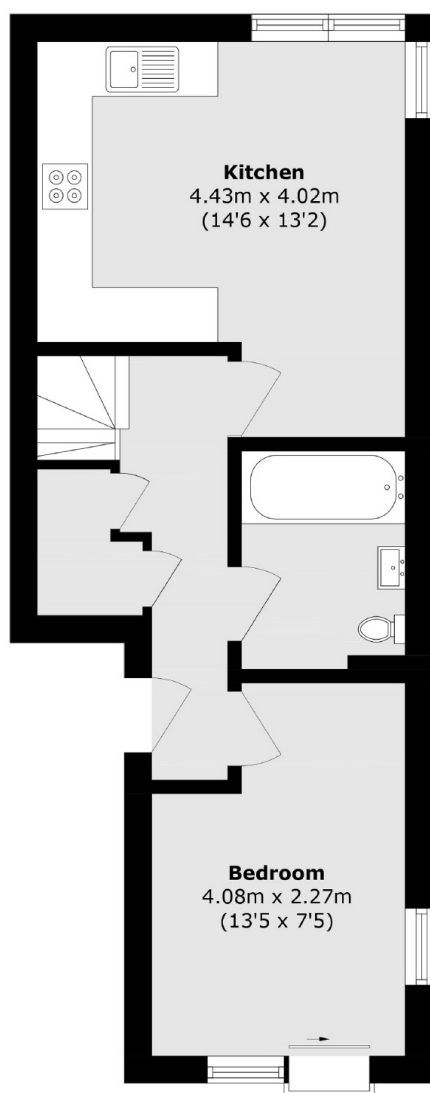
A two bedroom duplex pub conversion measuring just shy of 900 sq ft. Converted in 2018 the property is modern throughout and has a separate kitchen with room to dine, two bathrooms, Juliet balconies and triple aspect due to its corner positioning. The building also benefits from having communal solar panels.

Ashwood House is located half a mile to Homerton, Hackney Central & Hackney Downs Overground stations offering easy access into the City and beyond. The many shops, restaurants, bars and weekend market of Mare Street & Chatsworth Road are both within walking distance only half a mile away. A short walk away are the green spaces of Victoria Park, Well Street Common and the Hackney Marshes.

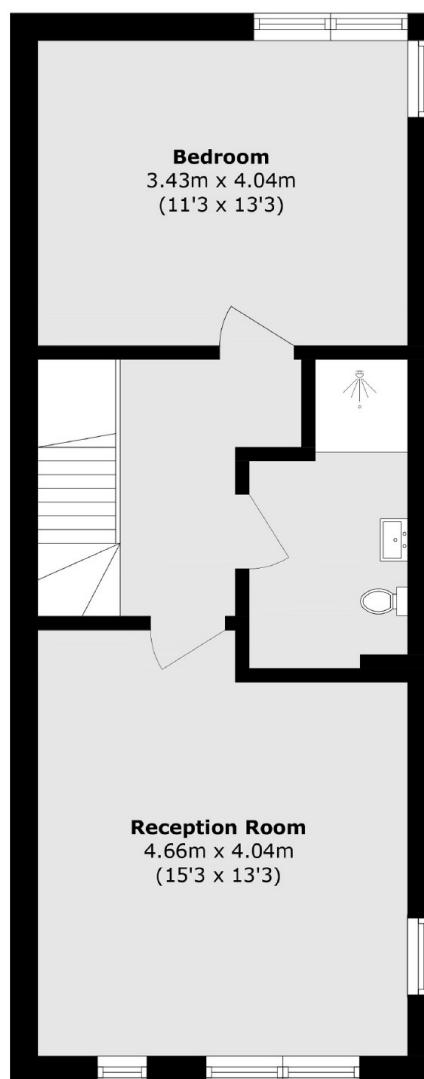
### Features

- Two Double Bedrooms
- Two Bathrooms
- Duplex
- Pub Conversion
- Over 895 sq ft
- Chatsworth Road
- Top Floor

# Homerton Row, London, E9



**Third Floor**



**Fourth Floor**

Total area (approx.): 83.4 sq. m (897.7 sq. ft)