



**Sylvester Road, E8**

£925,000

**Dexters**



## Sylvester Road, E8

A modern period style townhouse in the heart of Hackney. Spread over four floors and 1245 sq ft the property offers three double bedrooms, two bathrooms; one en-suite and an additional W/C, underfloor heating, wooden floors, sash windows and a private roof terrace.

Across the ground and lower ground floors is a modern spacious kitchen with built in appliances and room to dine. The living room has a bespoke glass floor and balustrade and an additional W/C.

On the first floor is the principal bedroom with modern en-suite and walk-in shower. Upstairs there are further two double bedrooms and family bathroom.

The property has plenty of storage and underfloor heating throughout. The private roof terrace offers amazing roof top views and a 360 degree aspect.

Sylvester Road is a no through road only 150 yards from Hackney Central and Hackney Downs Overground Stations offering excellent transport links across the City. There is a variety of high street shops, cafes and restaurants on your doorstep and the famous Hackney Empire and Town Hall are only 100 yards. London Fields Park & Lido and weekend market are also half a mile away.

### Features

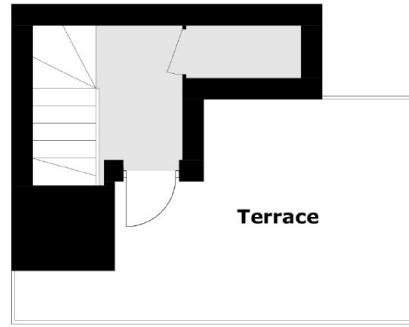
- Three Double Bedrooms
- Freehold Townhouse
- Private Roof Terrace
- Underfloor Heating
- Modern Fixtures
- Two Bathrooms



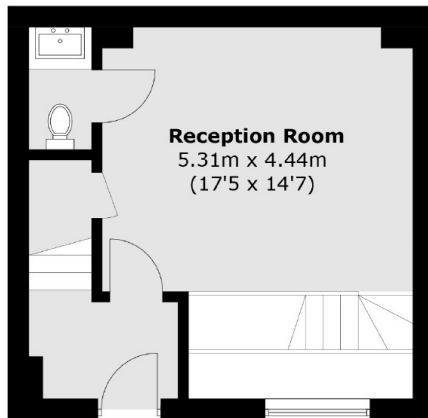




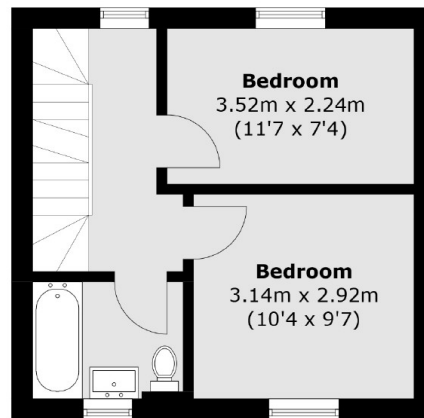
# Sylvester Road, London, E8



**Third Floor**



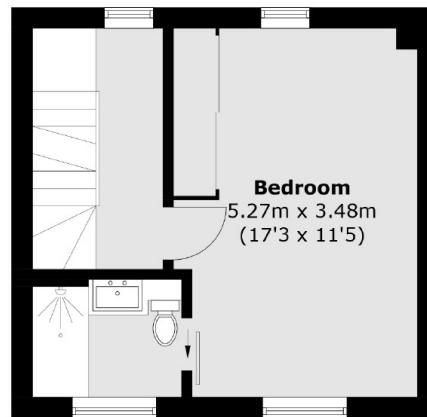
**Ground Floor**



**Second Floor**



**Lower Ground Floor**



**First Floor**

Total area (approx.): 116.0 sq. m (1,248.6 sq. ft)  
Terrace: 13.1 sq. m (141.0 sq. ft)