



Sylvester Road, E8

£1,050,000

Dexters



Sylvester Road, E8

A freehold modern townhouse in the heart of Hackney. Spread over four floors the property offers three double bedrooms, two bathrooms; one en-suite and an additional W/C, underfloor heating, wooden floors, sash windows and a private roof terrace.

Across the ground and lower ground floors is a modern kitchen with built in appliances and room to dine. There is a spacious living room with bespoke glass floor and balustrade and an additional W/C.

On the first floor is the principal bedroom with modern en-suite and walk-in shower. Upstairs there are two double bedrooms and family bathroom.

The property has plenty of storage and underfloor heating throughout. The private roof terrace offers amazing roof top views and benefits from a 360 degree aspect.

Sylvester Road is a no through road only 150 yards from Hackney Central and Hackney Downs Overground Stations offering excellent transport links across the City. There is a variety of high street shops, cafes and restaurants on your doorstep and the famous Hackney Empire and Town Hall are only 100 yards. London Fields Park & Lido and weekend market are also half a mile away.

Features

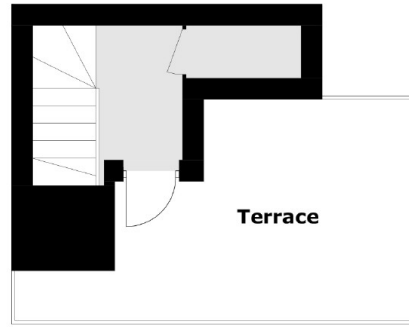
- Three Double Bedrooms
- Freehold Townhouse
- Private Roof Terrace
- Underfloor Heating
- Modern Fixtures
- Two Bathrooms



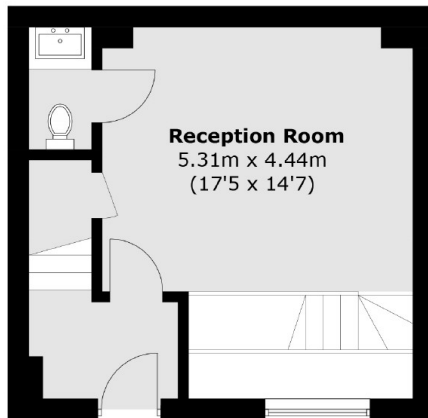




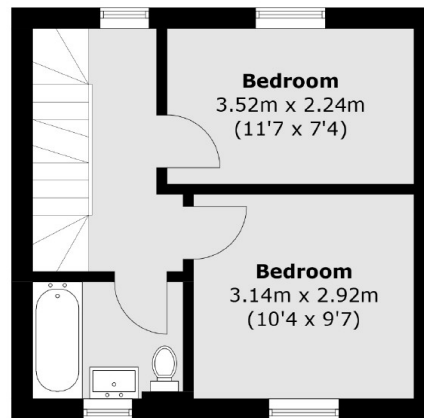
Sylvester Road, London, E8



Third Floor



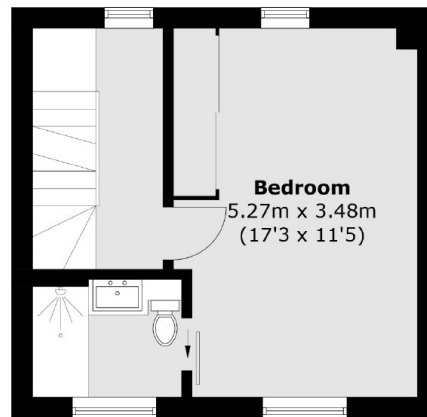
Ground Floor



Second Floor



Lower Ground Floor



First Floor

Total area (approx.): 116.0 sq. m (1,248.6 sq. ft)
Terrace: 13.1 sq. m (141.0 sq. ft)