

Homerton Road, E9

£450,000

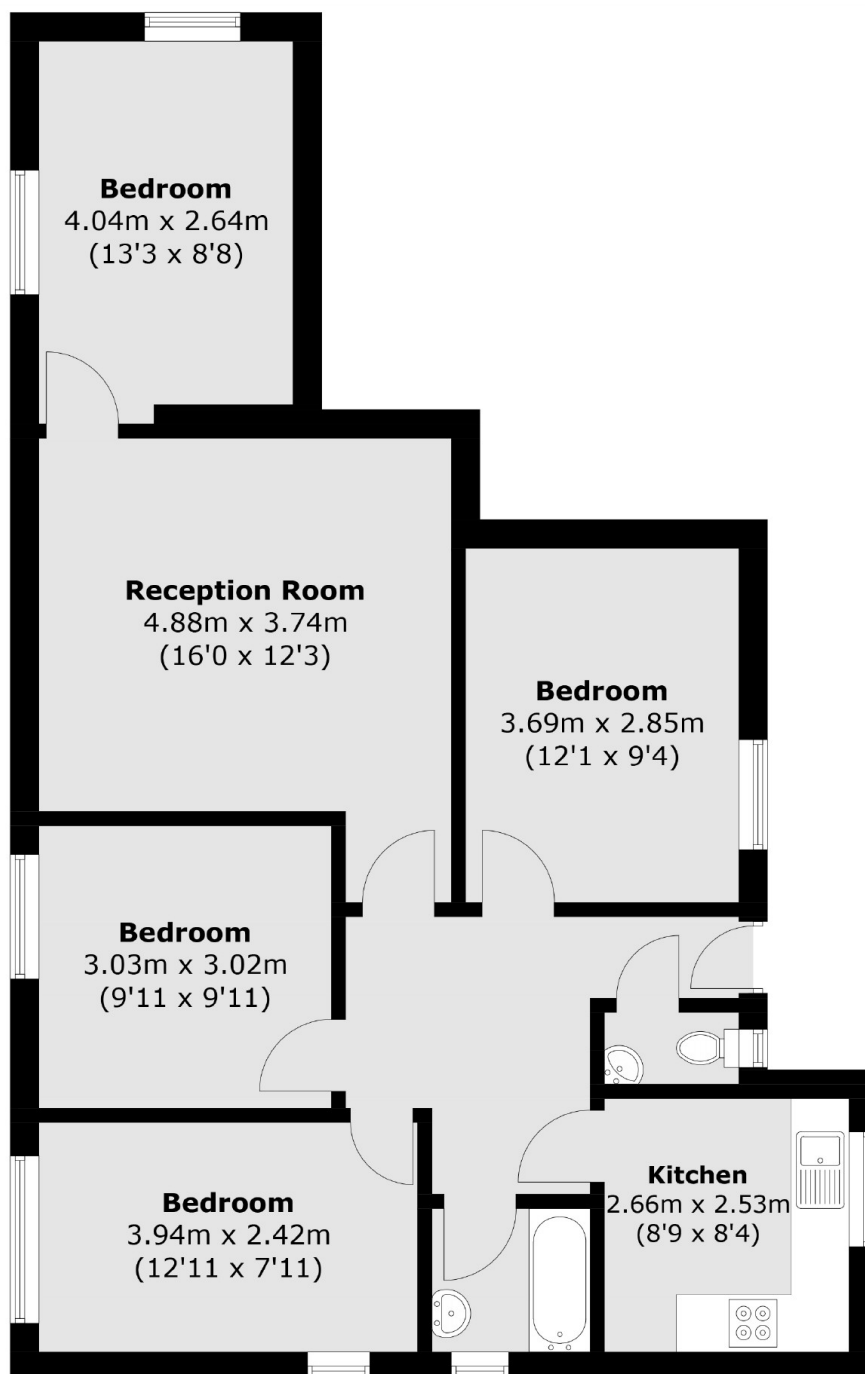
A four bedroom purpose built flat with park views over Mabley Green. The property is in good condition with a separate kitchen, W/C, double glazed windows and lift access. It is being sold chain free.

Malsmead House is ideally located next to the green spaces of the Hackney Marshes, the River Lea, Victoria Park and Queen Elizabeth Park offering many outdoor activities. Both Homerton and Hackney Wick Overground Stations are under a mile away for easy access to the rest of London. Chatsworth Road is also within easy reach with its many cafes, shops and Sunday Market.

Features

- Offers Over
- Four Bedrooms
- Ideal for Buy-To-Let
- Chain Free
- Separate Kitchen
- Park Views
- Lift Access
- Hackney Marshes

Homerton Road, London, E9



Total area (approx.): 80.4 sq. m (865.4 sq. ft)