



Somerford Grove, N16

£925,000

A four double bedroom Victorian terrace with a private garden in Stoke Newington. The house offers great potential with previous planning permission for a side return, rear extension and loft. It is being sold chain free.

Somerford Grove is ideally located on a one way street within very close proximity to the many shops, cafes and amenities of Stoke Newington Road, Dalston and Church Street. Rectory Road and Dalston Kingsland Overground Stations are both half a mile away offering excellent transport links into Central London. The green space of Hackney Downs Park is a short walk away.

Features

- Offers Over
- Four Bedrooms
- Victorian Terrace
- Freehold
- Garden
- Hackney Downs Park
- Chain Free



Somerford Grove, N16

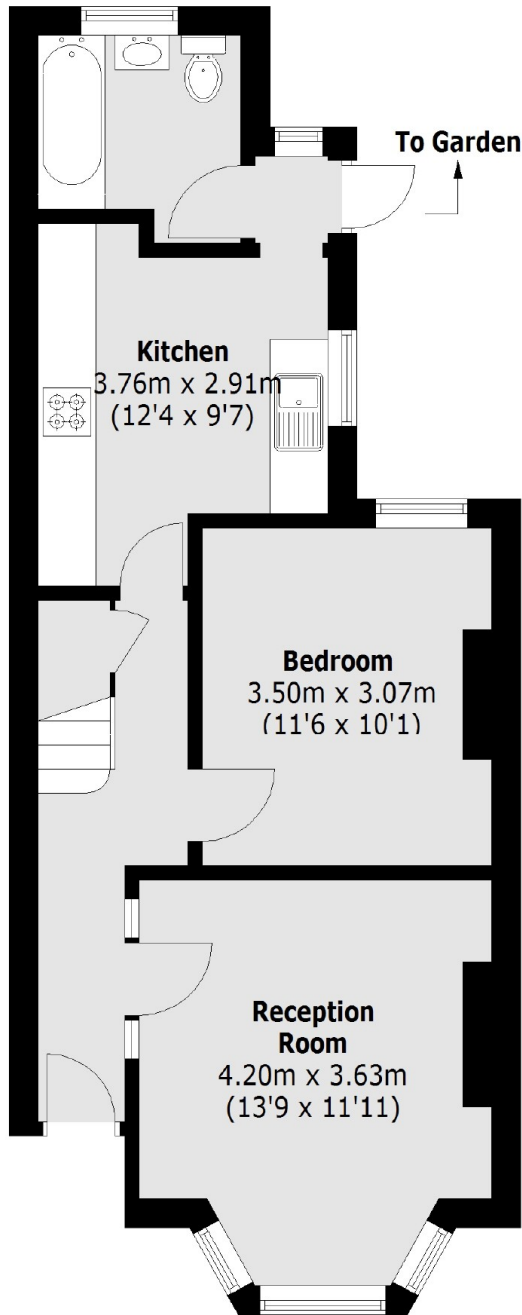
On the ground floor is a west facing reception room with bay window, walk in kitchen, bedroom, family bathroom and access to the large private garden.

Upstairs are three bedrooms with feature fireplace and separate W/C. The home has double glazed windows throughout.

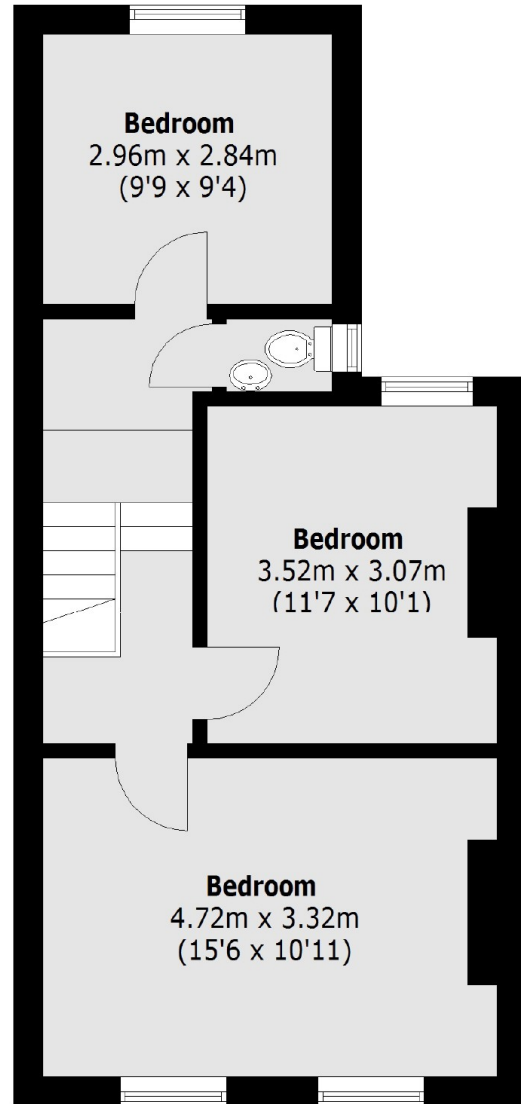
It is being sold chain free and previous plans are available for a side return and rear & loft extension, which would need to be re-submitted, offering excellent potential for further square footage.



Somerford Grove, London, N16



Ground Floor



First Floor

Total area (approx.): 92.04 sq. m (990.7 Sq. ft)