



Millfields Road, E5

£500,000

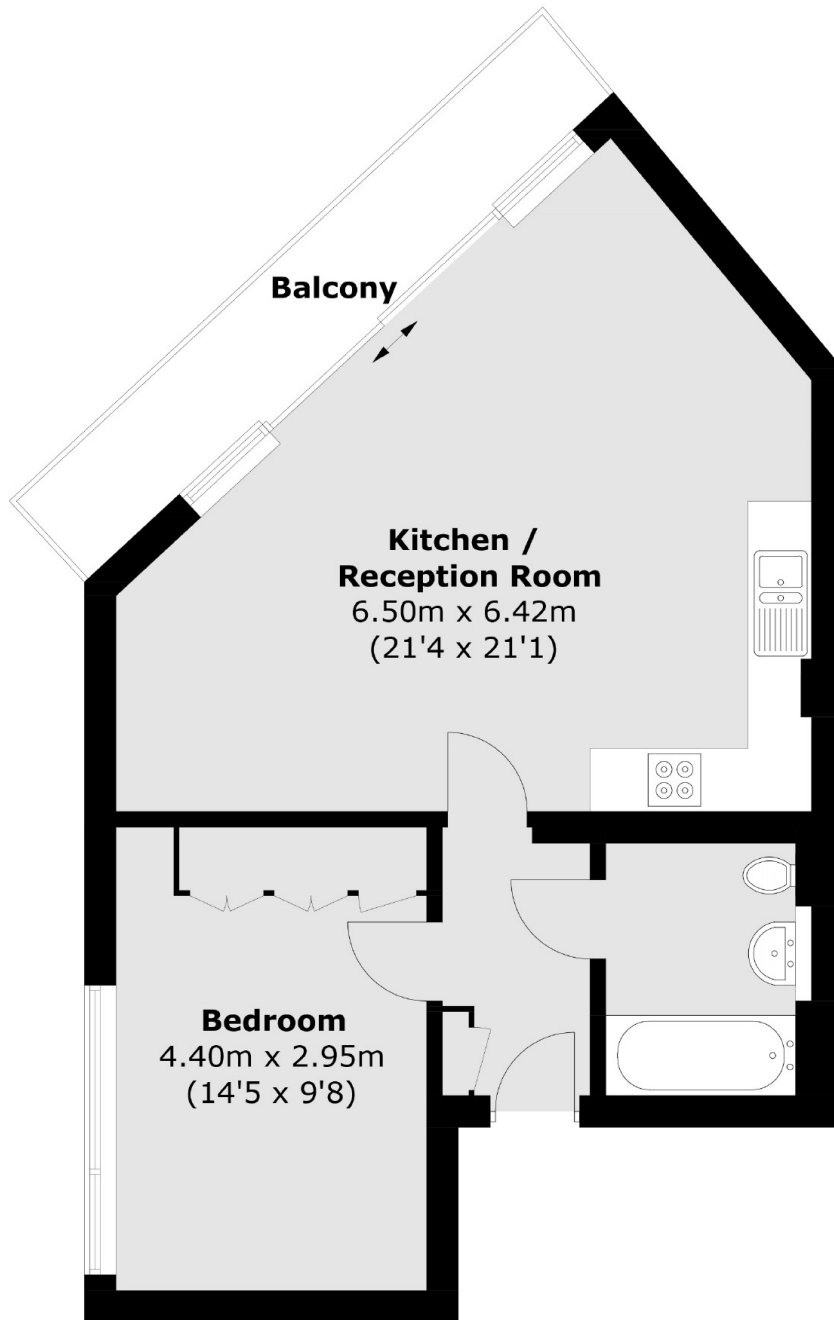
A one bedroom penthouse apartment located within the boutique development Moore House. The property is modern throughout with an open plan kitchen/living area with floor to ceiling glass and large south facing balcony offering great views. It is being sold with Share of the Freehold and secure bike storage.

Moore House is located on the corner of Millfields & Mildenhall Road and overlooks Clapton Pond. There are many independent cafes, restaurants and shops on your doorstep including the well known Palm Deli & Casey's Bakery. The property is nestled in between many green spaces including Hackney Downs Park, Millfields Park and the Hackney Marshes. Clapton Overground is half a mile away.

Features

Offers Over
One Double Bedroom
Penthouse Apartment
Modern
Bike Storage
South Facing Balcony
Share of Freehold

Millfields Road, London, E5



Total area (approx.): 53.7 sq. m (578.0 sq. ft)
Balcony area : 6.8 sq. m (73.2 sq. ft)

Dexters

Hackney Central
331 Mare Street
Hackney
London
Sales
020 7067 2420

Energy Rating: B. We aim to make our particulars both accurate and reliable. However they are not guaranteed; nor do they form part of an offer or contract. If you require clarification on any points then please contact us, especially if you're traveling some distance to view. Please note that appliances and heating systems have not been tested and therefore no warranties can be given as to their good working order.

 **RICS** | Regulated
Estate Agent
and Letting Agent

[dexters.co.uk](https://www.dexters.co.uk)