



## Webb Estate, E5

£2,200 Per calendar month

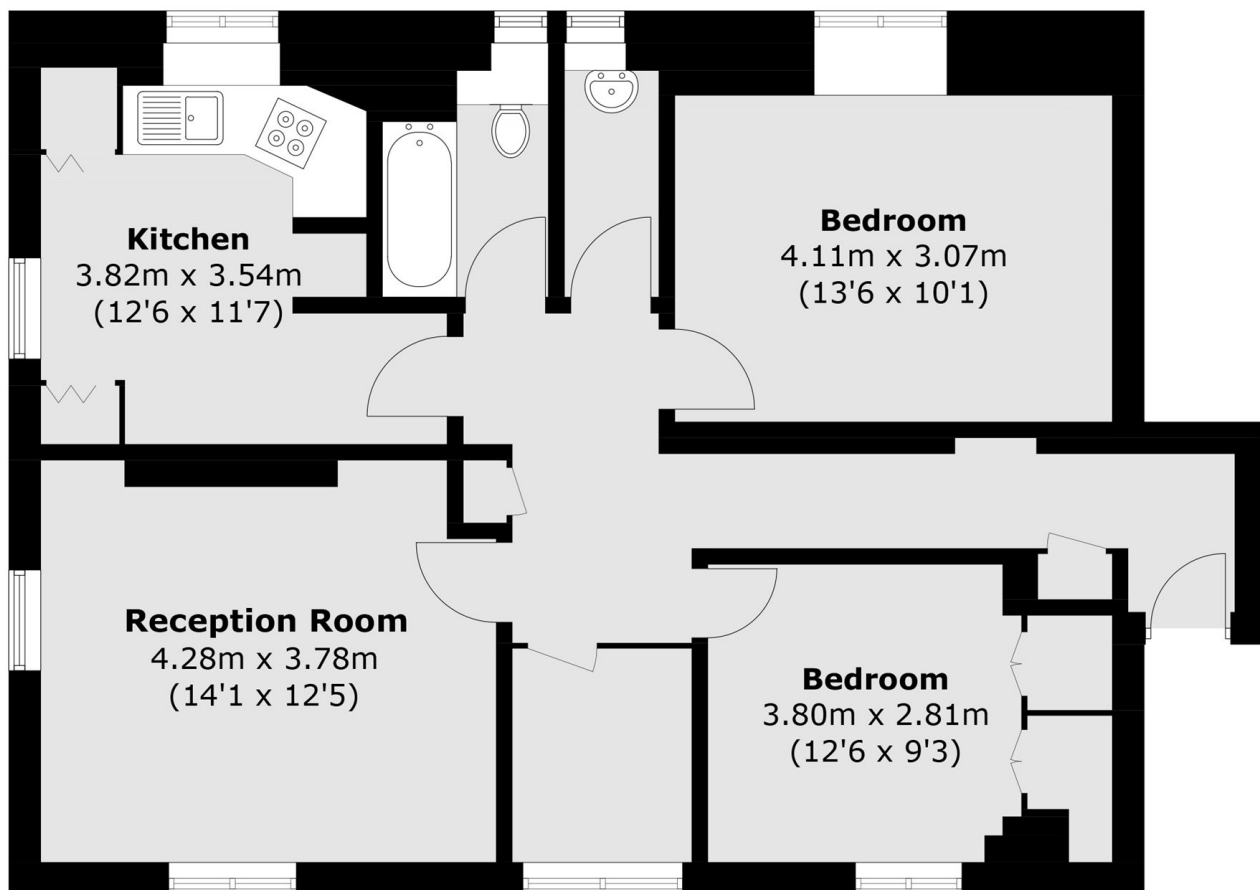
A beautiful two double bedroom apartment located near Clapton Common. This spacious property comes with an separate kitchen and living area, two double size bedrooms with an additional workspace room.

Ideally located near Clapton Common and Springfield Park, Peregrine Court is moments from local cafes and shops, with Clapton Overground offering quick and easy access to the City.

### Features

Two Double Bedrooms  
Great Location  
Spacious  
Wooden Flooring  
Open Plan  
Furnished

# Webb Estate, London, E5



## Third Floor

Total area (approx.): 76.3 sq. m (821.3 sq. ft)