



## Harry Zeital Way, E5

### £425,000

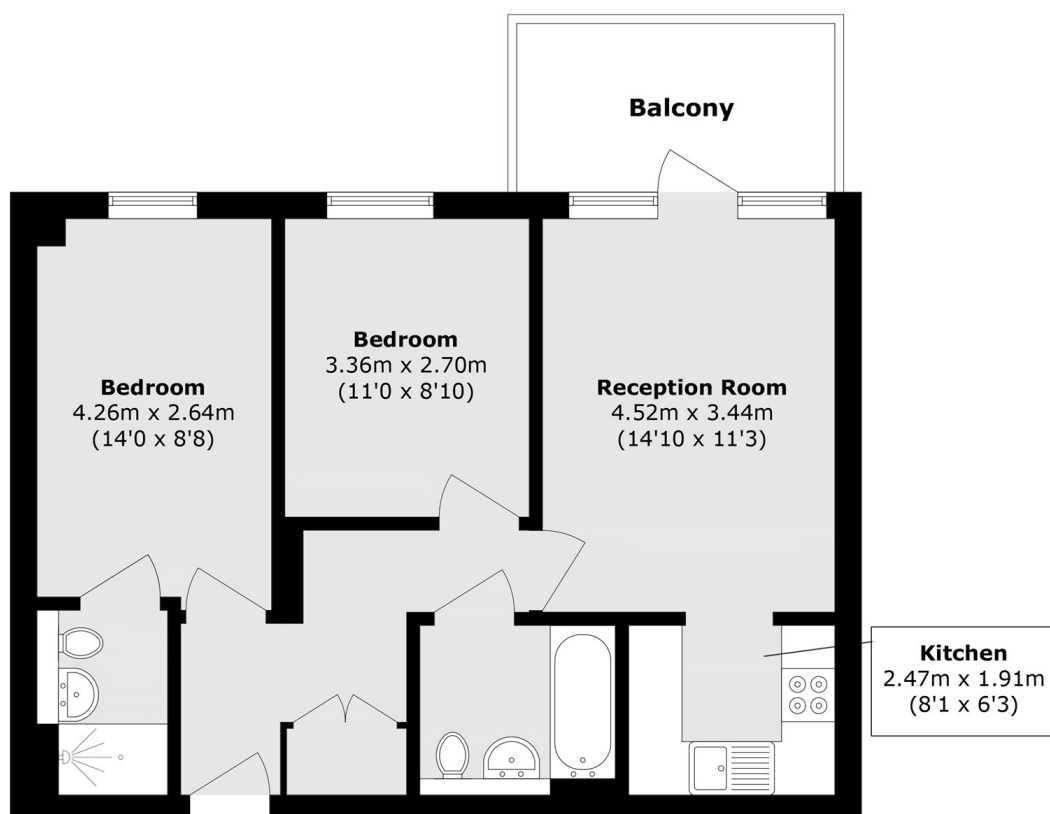
A two bedroom, two bathroom apartment next to the River Lea and Millfields Park in a sought after Clapton location. The property offers open plan living across 625 sq ft with floor to ceiling windows, private balcony, family bathroom & en-suite, plenty of storage and an allocated underground parking space. The building has lift access and secure bike storage.

Fenland House is located down a cul-de-sac on the edge of North Millfields and the River Lea. Walthamstow and Hackney Marshes are nearby, offering plenty of recreational and fitness activities, including horse-riding and ice skating. The apartment is just over half a mile to Clapton Overground Station offering direct access into the transport hub Liverpool Street. Chatsworth Road with its Sunday market and many independent shops and cafés is within walking distance only half a mile away.

### Features

- Two Bedrooms
- Two Bathrooms
- Modern Block
- Balcony with Canal & Park Views
- Underground Parking
- Lift Access
- Chain Free

# Harry Zeital Way, London, E5



Total area (approx.): 58.2 sq. m (626.4 sq. ft)

Balcony area (approx.): 6.8 sq. m (73.1 sq. ft)