



## Mabley Street, E9

### £500,000

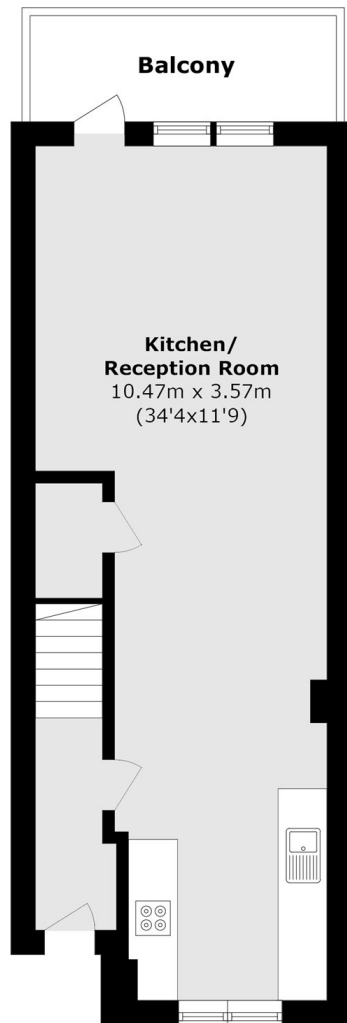
A three bedroom split level flat with private balcony on a quiet residential street in Homerton. Measuring over 790 sq ft the current owners have renovated throughout with an open plan kitchen and living room, family bathroom with white gloss tiles & wooden floors. The property benefits from having plenty of storage and its close proximity to green spaces and transport as well as being sold with no onward chain.

Mabley Street is under a quarter of a mile from Victoria Park and Chatsworth Road with weekend markets, independent shops, cafés and restaurants. The property is half a mile from Homerton Overground and just over half a mile from Hackney Wick Overground offering direct trains into the transport hub Stratford. The Hackney Marshes & Victoria Park are close by providing many opportunities for leisure & outdoor recreation.

### Features

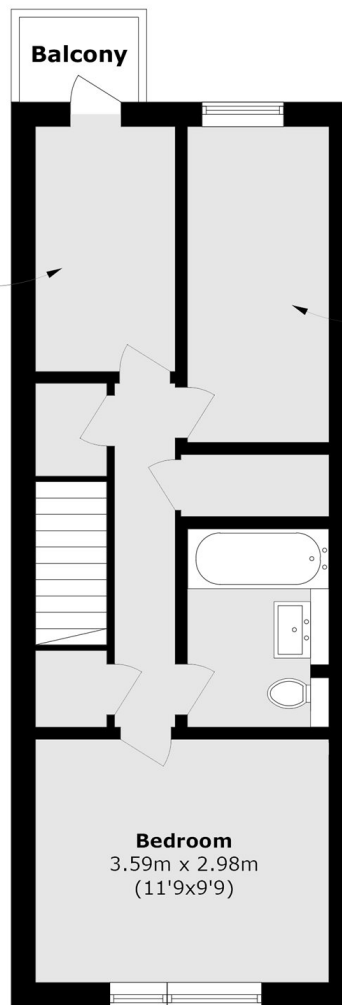
- Three Bedrooms
- Private Balcony
- Split Level
- Over 790 sq ft
- Recently Renovated
- Victoria Park
- Chain Free

# Mabley Street, London, E9



**First Floor**

**Bedroom**  
3.00m x 1.77m  
(9'10x5'10)



**Second Floor**

**Bedroom**  
3.87m x 1.73m  
(12'8x5'8)

**Bedroom**  
3.59m x 2.98m  
(11'9x9'9)

Total area (approx.): 74.0 sq. m (796.5 sq. ft)  
Balcony area (approx.): 6.3 sq. m (67.8 sq. ft)