



Lea Bridge Road, E10

£1,500,000

A rare to market Victorian home measuring over 3,300 sq ft with a private driveway and large private garden. The home currently offers nine bedrooms, three kitchens, four bathrooms, large basement and loft extension. The property is ideal for development & investment or a family home.

The immediate neighbourhood offers a variety of local amenities including shops, cafes and services along the high street. For outdoor leisure, green spaces such as Leyton Jubilee Park and Walthamstow Marshes are within easy reach. Leyton Midland Road station is half a mile away and Lea Bridge Road is one mile away making it straightforward to connect with the wider rail network.

Features

- Victorian Terrace
- Nine Bedrooms
- Four Bathrooms
- Private Garden
- Private Driveway
- Potential To Extend, STPP
- Over 3,300 sq ft
- Investment Opportunity



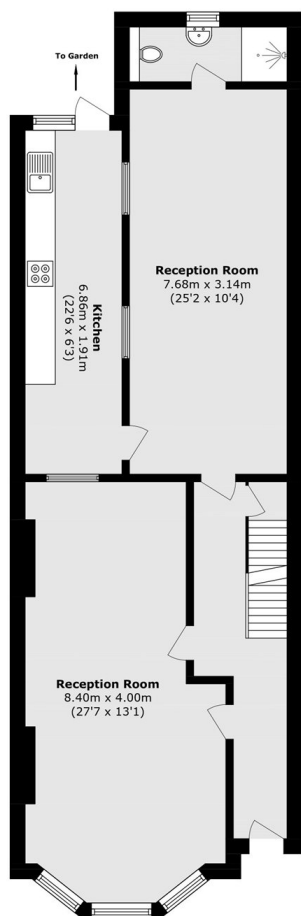
Lea Bridge Road, E10

The property had planning permission for a double height rear extension which has now expired.

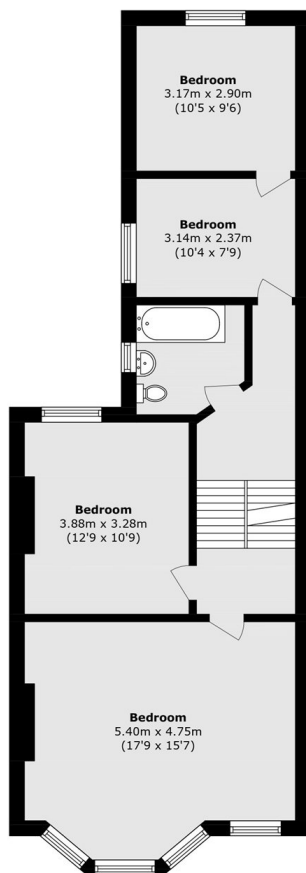
It also sits within the catchment area of a number of Outstanding and Good primary and secondary schools



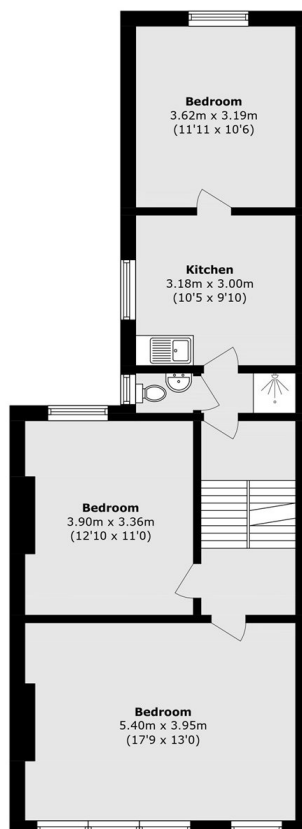
Lea Bridge Road, London, E10



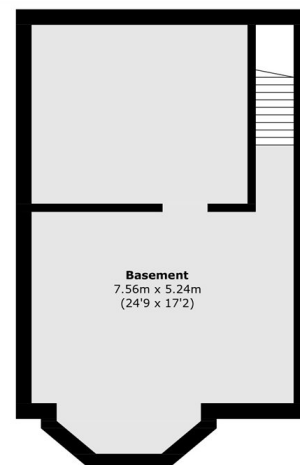
Ground Floor



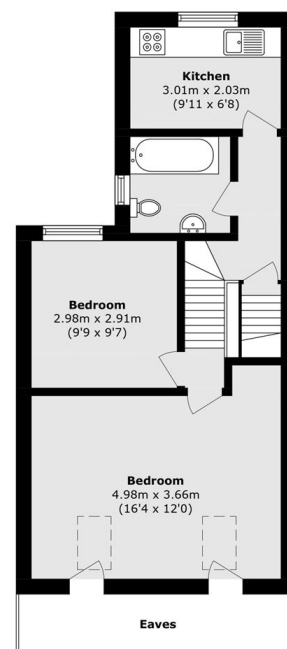
First Floor



Second Floor



Basement



Third Floor

Total area (approx.): 310.4 sq. m (3341.1 sq. ft)
(Excluding eaves / Including basement)