



Edmeston Close, E9

£750,000

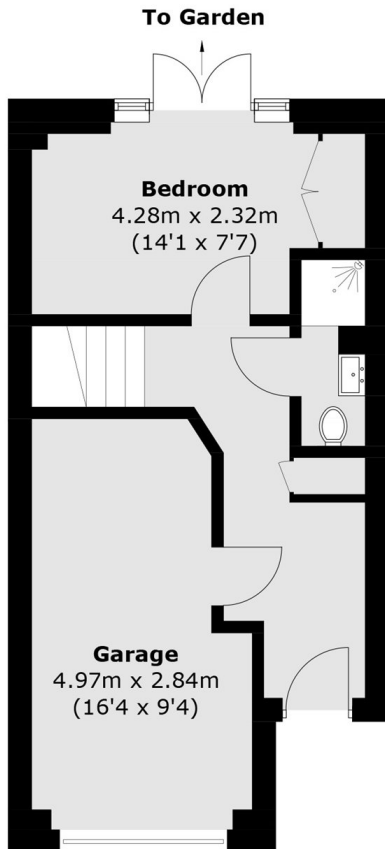
A three bedroom end of terrace with garage, driveway and private garden. Set over three storeys and 1,196 sq ft, the property has a separate kitchen with room to dine, large reception room, double glazed windows, two bathrooms and insulated loft space. Available for the first time in over 30 years this home is ideal for families and investors alike.

The property is surrounded by green spaces from Mabley Green, Hackney Marshes to Victoria Park and the Olympic Park, all just a stroll away. There is an array of pubs, restaurants, and vibrant weekend markets along Chatsworth Road, Victoria Park Village and Hackney Wick. Conveniently located within walking distance to both Homerton Overground (0.5 miles) and Hackney Wick Overground (0.7 miles) for direct access to Highbury & Islington as well as Stratford Westfield Shopping Centre & Stratford International train station.

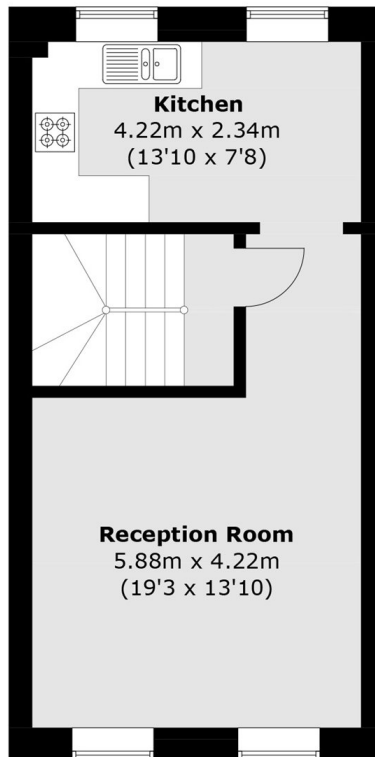
Features

- Freehold End of Terrace
- Three Double Bedrooms
- Two Bathrooms
- Garage
- Private Garden
- Victoria Park
- Cul-De-Sac

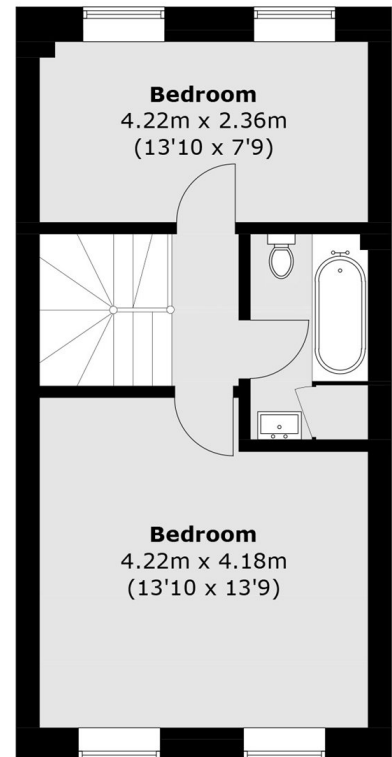
Edmeston Close, London, E9



Ground Floor



First Floor



Second Floor

Total area (approx.): 111.2 sq. m (1,196.9 sq. ft)
(Including Garage)