



Colvestone Crescent, E8

£527,500

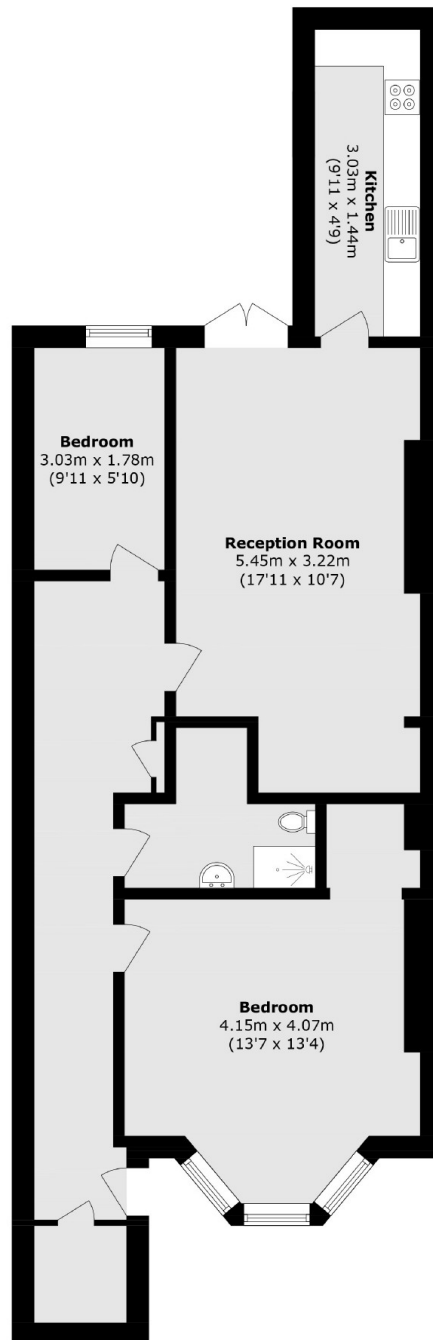
A two bedroom garden flat offering potential to extend in a prime Dalston location. Measuring over 725 sq ft the property benefits from having it's own private entrance, sash windows, original shutters and a Share of the Freehold. It is being sold chain free.

Colvestone Crescent is located moments away from Ridley Road, Mare Street and Kingsland High Street with an abundance of cafés and local amenities. Dalston Kingsland & Dalston Junction are under a quarter of a mile away and Hackney Downs half a mile away providing easy access to the rest of the City. Hackney Downs Park is half a mile away and London Fields with its Lido and famous weekend market is under one mile.

Features

- Victorian
- Private Garden
- Two Bedrooms
- Potential to Extend STPP
- Dalston
- Share of Freehold

Colvestone Crescent, London, E8



Total area (approx.): 67.6 sq. m (727.6 sq. ft)

Dexters

Hackney Central
331 Mare Street
Hackney
London
Sales
020 7067 2420

Energy Rating: C. We aim to make our particulars both accurate and reliable. However they are not guaranteed; nor do they form part of an offer or contract. If you require clarification on any points then please contact us, especially if you're traveling some distance to view. Please note that appliances and heating systems have not been tested and therefore no warranties can be given as to their good working order.

 **RICS** | Regulated
Estate Agent
and Letting Agent

dexters.co.uk