



Graham Road, E8

£450,000

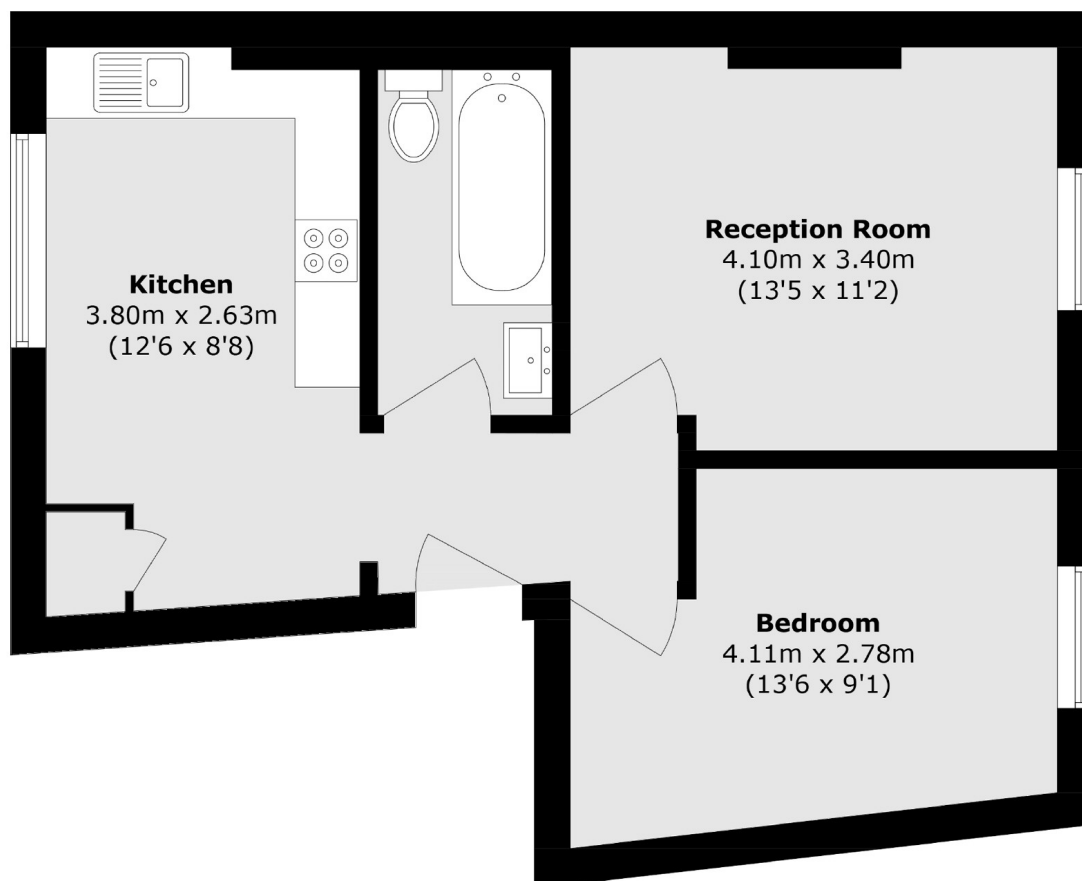
A one bedroom period conversion in the heart of Hackney with communal garden. The property has a spacious living room with wooden floors, double bedroom, sash windows, kitchen/diner and modern family bathroom with white gloss tiles. It is being sold with no onward chain and a Share of the Freehold.

The properties entrance is on the corner of Navarino Road & Graham Road which runs between Dalston and Mare Street with many shops, cafes and amenities to choose from including Broadway Market and Wilton Way. It is under half a mile from London Fields and its tennis courts and Lido. Hackney Central and Hackney Downs Overground is a quarter of a mile away providing great transport links to the rest of the City.

Features

- One Double Bedroom
- Victorian End of Terrace
- Shared Garden
- Chain Free
- Share of Freehold
- Entrance on Navarino Road

Graham Road, London, E8



Total area (approx.): 47.2 sq. m (508.0 sq. ft)