



Cecilia Road, E8

£1,200,000

Set on one of Hackney's most sought-after residential streets, this property is a well proportioned three-bedroom maisonette spanning just under 1,300 sq ft over three floors. It has a large shared garden currently but can be split 50/50 during sale. It is being sold with a Share of the Freehold.

Cecilia Road is located moments away from Ridley Road, Mare Street and Kingsland High Street with an abundance of cafés and local amenities. Dalston Kingsland, Dalston Junction and Hackney Downs Overground stations are all half a mile away providing easy access to the rest of the City. London Fields & Hackney Downs Park are both under one mile away.

Features

- Victorian Maisonette
- Three Bedrooms + Office
- Split Level
- Shared Garden, can be split 50/50 with downstairs
- Share of Freehold
- Loft Extension

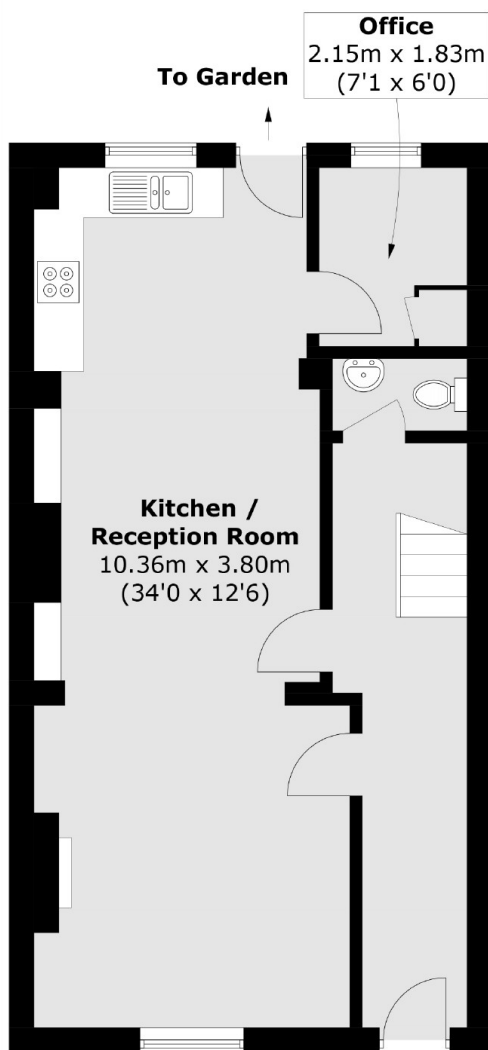


Cecilia Road, E8

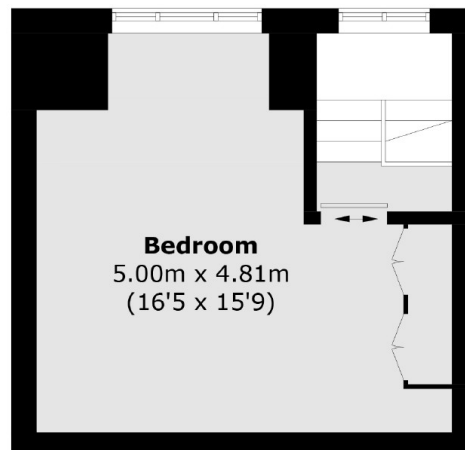
This charming home blends classic Victorian character with excellent living space in a vibrant East London neighbourhood. Inside, the property boasts high ceilings, large sash windows, and a wealth of period features, including decorative fireplaces, original shutters and wooden floors. The bright reception room offers a welcoming space for relaxing or entertaining with an open plan kitchen and room to dine. Access to the shared garden is via a set of stairs off the kitchen. A separate W/C and office is on this floor. Three well-sized bedrooms and family bathroom are arranged across the upper floors.



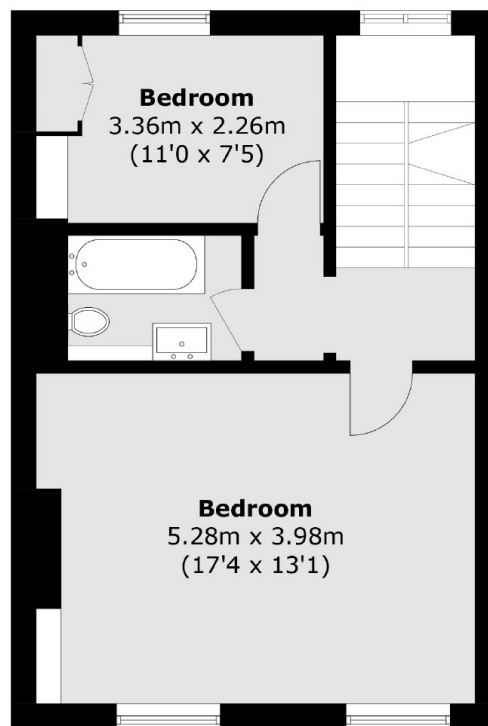
Cecilia Road, London, E8



Ground Floor



Second Floor



First Floor

Total area (approx.): 120.7 sq. m (1,299.1 sq. ft)