



Atkins Square, E8

£550,000

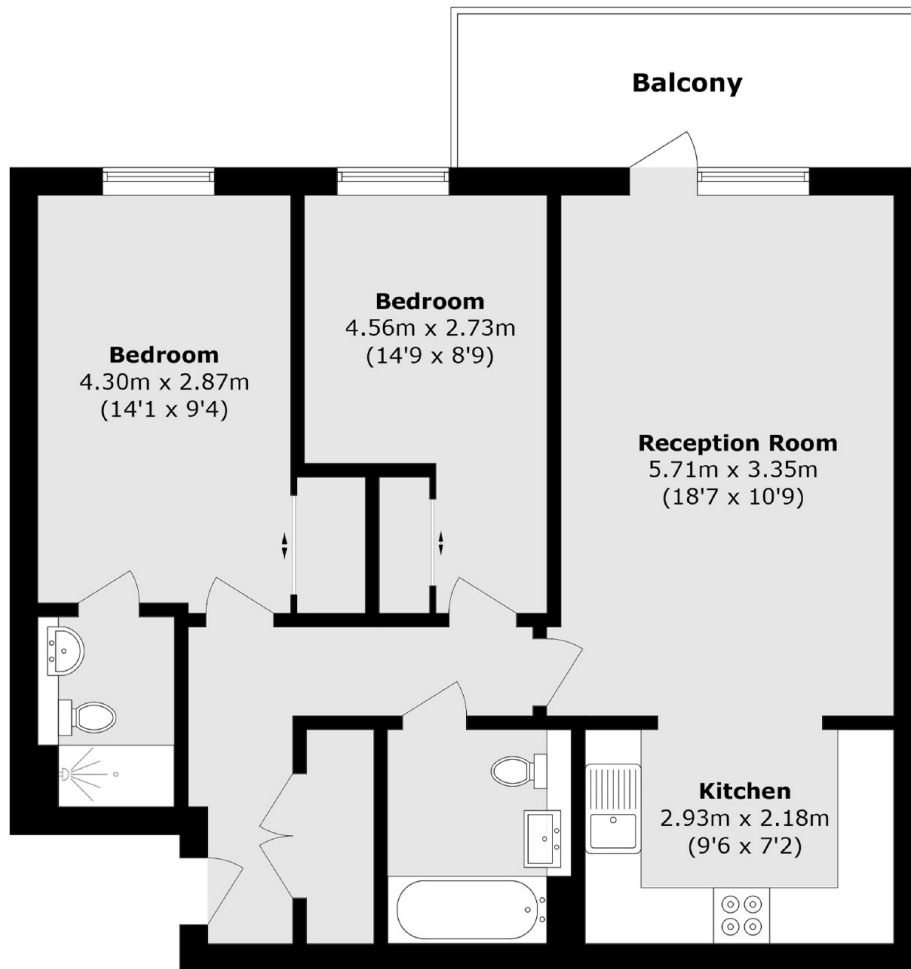
A modern two-bedroom, two-bathroom apartment situated within the award-winning Atkins Square development. The property benefits from an open-plan kitchen- living area, with direct access to a private balcony. The kitchen is modern, with integrated appliances and there are two double bedrooms. There is extensive storage throughout. Residents of Atkins Square benefit from 24/7 concierge, communal roof terrace and gym.

Centrally located on Dalston Lane, the apartment is surrounded by an abundance of popular restaurants, shops and bars on Mare Street, Broadway Market and Lower Clapton Road. The green spaces of Hackney Downs Park and London Fields are also within walking distance with tennis courts and Lido. Transport links include Hackney Downs just 150m away with direct trains to Liverpool Street, and Hackney Central a quarter of a mile away for easy access to Central

Features

- Two Bedrooms
- Two Bathrooms
- Private Balcony
- Modern
- Concierge and Gym
- Communal Roof Terrace

Atkins Square, London, E8



Total area (approx.): 71.1 sq. m (765.3 sq. ft)
Balcony area (approx.): 8.1 sq. m (87.2 sq. ft)