



Marcon Place, E8

£550,000

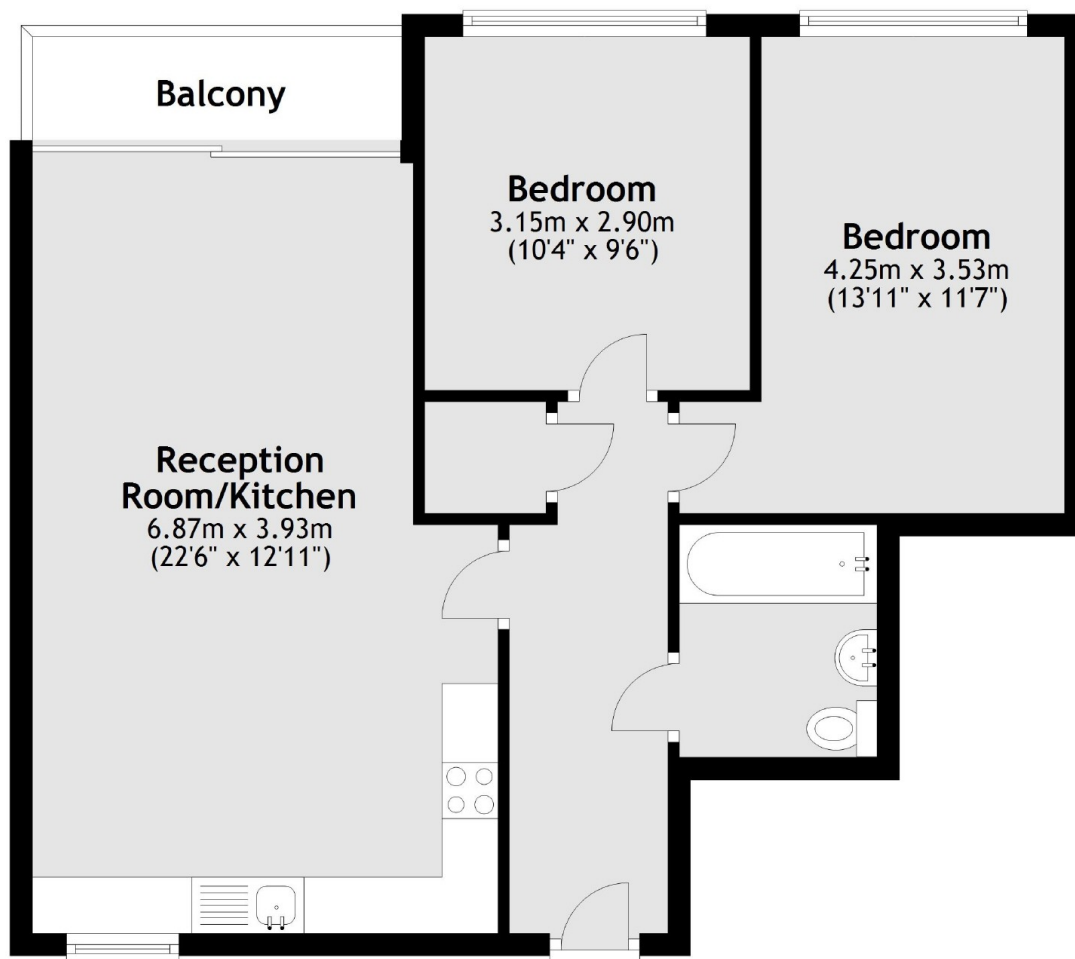
A spacious two double bedroom apartment set within the gated development, Cottrill Gardens. The property has wooden flooring throughout, an open plan reception room with private balcony, plenty of storage and an allocated parking space. It is being sold chain free.

Cottrill Gardens benefits from a variety of local amenities, cafés, restaurants and shops in very close proximity. The green open spaces of Hackney Downs Park and London Fields are both half a mile away with tennis & basketball courts and lido. Transport links include Hackney Downs, Hackney Central Overground and Dalston Junction.

Features

- Offers Over
- Two Double Bedrooms
- Allocated Parking
- Chain Free
- Private Balcony
- Secure Development
- Close to Amenities

Marcon Place, London, E8



Main area: Approx. 60.3 sq. metres (649.5 sq. feet)
Plus balconies, approx. 3.5 sq. metres (37.4 sq. feet)

Dexters

Hackney Central
331 Mare Street
Hackney
London
Sales
020 7067 2420

Energy Rating: . We aim to make our particulars both accurate and reliable. However they are not guaranteed; nor do they form part of an offer or contract. If you require clarification on any points then please contact us, especially if you're traveling some distance to view. Please note that appliances and heating systems have not been tested and therefore no warranties can be given as to their good working order.

 **RICS** | Regulated
Estate Agent
and Letting Agent

[dexters.co.uk](https://www.dexters.co.uk)