



Montague Road, E8

£1,250,000

A sensitively restored four bedroom Victorian maisonette with a private garden on a quiet residential road in E8. The property measures over 1360 sq ft and has an open plan kitchen reception room with high ceilings, cornicing, parquet flooring and a unique zinc clad loft extension. It is being sold with a Share of the Freehold.

Montague Road is located moments away from Ridley Road, Mare Street and Kingsland High Street with an abundance of cafés and local amenities. Dalston Kingsland, Dalston Junction and Hackney Downs Overground stations are all quarter of mile away providing easy access to the rest of the City. Hackney Downs Park is half a mile away and London Fields with its Lido and famous weekend market is under one mile.

Features

- Victorian Maisonette
- Four Bedrooms
- Two Bathrooms
- Share of Freehold
- Garden
- Over 1360sq ft
- Zinc Extension
- Original Features

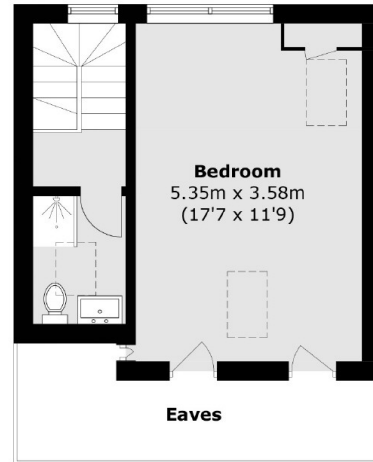


Montague Road, E8

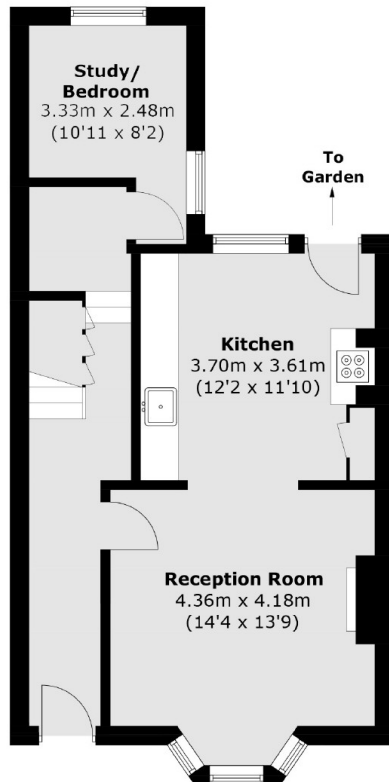
Set across three levels this home has been completely renovated throughout by its current owners cleverly combining the old with the new. On the raised ground floor is the open plan kitchen reception room with feature fireplace, sash bay window, original shutters, ceiling rose and cornicing. The owner has used reclaimed parquet flooring in the living area and restored Victorian tiles in the hallway. The bespoke kitchen has blue cabinetry, recycled plastic countertops & Belfast sink. Access to the garden is via a French glass door and a study/bedroom is to the rear. On the first floor is a large modern bathroom with glossy green tiles, free standing tub and walk in shower. Two double bedrooms are on this level including the primary bedroom at the front of the house. In the loft is a larger than average bedroom with eaves storage, en-suite bathroom, wood panelling and skylights. There are double glazed sash windows and bespoke lighting throughout.



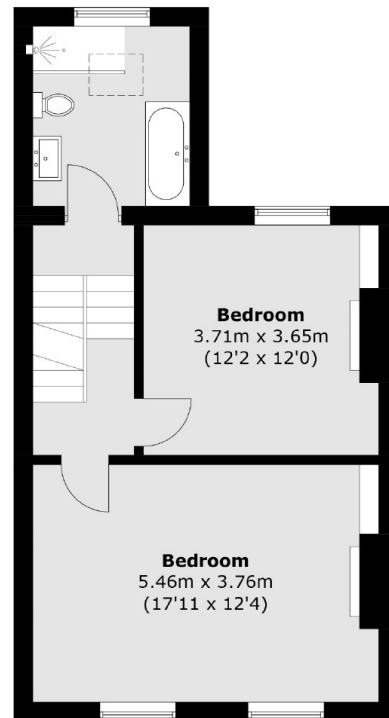
Montague Road, London, E8



Second Floor



Ground Floor



First Floor

Total area (approx.): 127.1 sq. m (1,368.0 sq. ft)
(Excluding Eaves)