



Millers Terrace, E8

£850,000

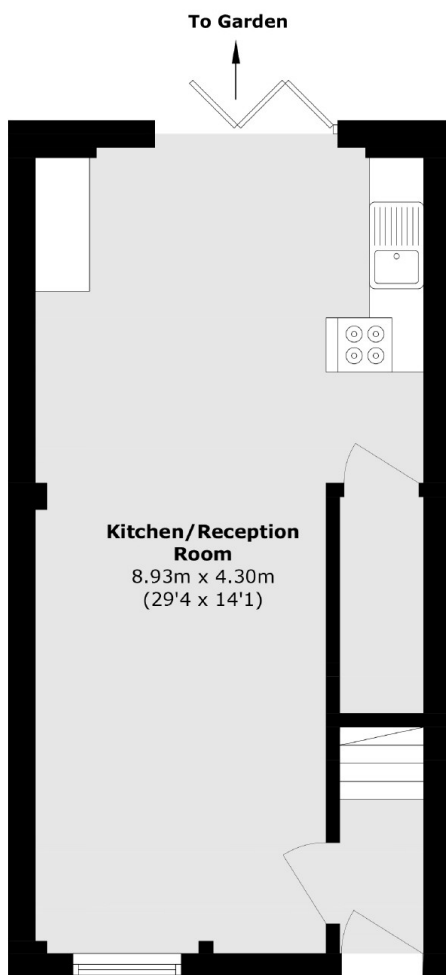
A two double bedroom converted factory on a quiet pedestrianised street in a central Dalston location. Set across two levels the home has been renovated throughout by its current owner and a spacious open plan kitchen living area with banquet seating and glass bi-fold doors leading to the private patio garden. Upstairs are two double bedrooms with built in wardrobes and family bathroom. There are high ceilings throughout and potential to extend, subject to planning.

Millers Terrace is located moments away from Kingsland High Street & Shacklewell Lane with an abundance of cafés, restaurants and local amenities. Dalston Kingsland & Dalston Junction are only 0.3 miles away providing easy access to the rest of the City. Hackney Downs Park is half a mile away and London Fields and Clissold Park are one mile away.

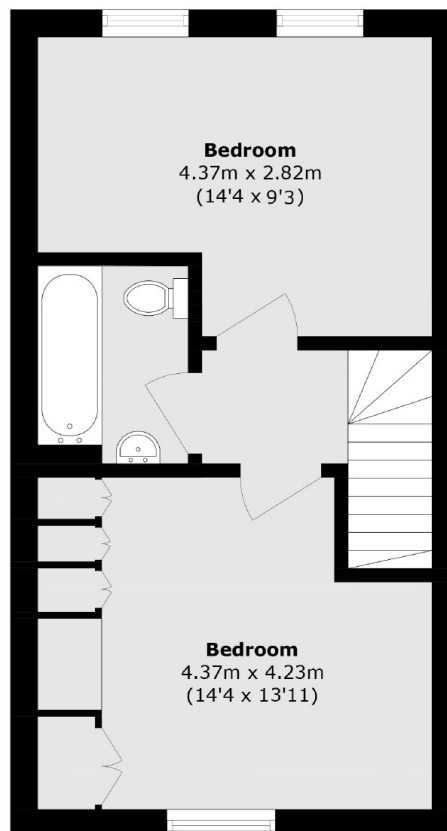
Features

- Offers Over
- Converted Factory
- Freehold
- Two Double Bedrooms
- Open Plan
- Renovated Throughout
- Potential To Extend, STPP
- West Facing Garden

Millers Terrace, London, E8



Ground Floor



First Floor

Total area (approx.): 75.8 sq. m (815.9 sq. ft)