



Daubeney Road, E5

£590,000

A three bedroom maisonette with a south facing private garden. Measuring over 890 sq ft, the current owners have thoughtfully renovated throughout to a high standard with bespoke cabinetry, terrazzo tiles, engineered wood flooring and modern fixtures & fittings.

Ashbourne Court is moments from vibrant Chatsworth Road as well as the green spaces of Millfields Park, Hackney Marshes and the River Lea offering many opportunities for outdoor recreation. Homerton Overground is half a mile away, only two stops into Stratford and Stratford International for numerous transport connections. The property is also within the catchment area of many Ofsted outstanding primary & secondary schools.

Features

- Three Bedrooms
- Maisonette
- South Facing Garden
- Hackney Marshes
- Chatsworth Road
- Open Plan
- Recently Renovated



Daubeney Road, E5

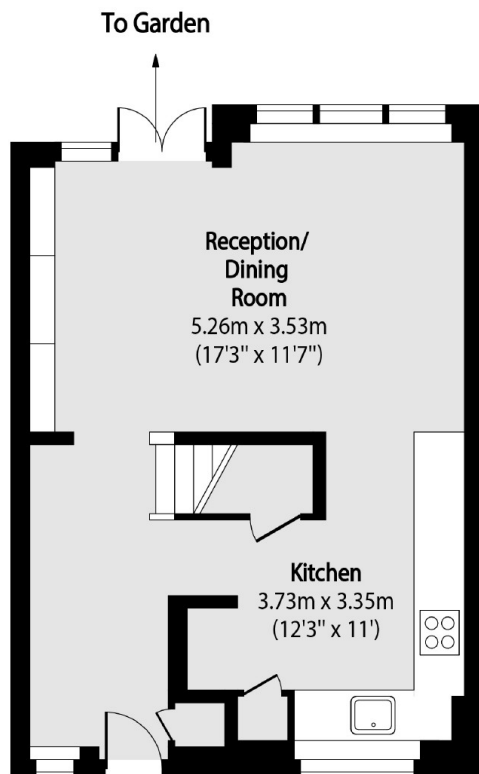
Entering via your own front door there is a spacious open plan living room with plenty of built in storage, wooden floors and L- shaped kitchen with white cabinets & marble style worktops.

Upstairs are three bedrooms with parquet flooring throughout, built in wardrobes and family bathroom with terrazzo tiles & black fixtures.

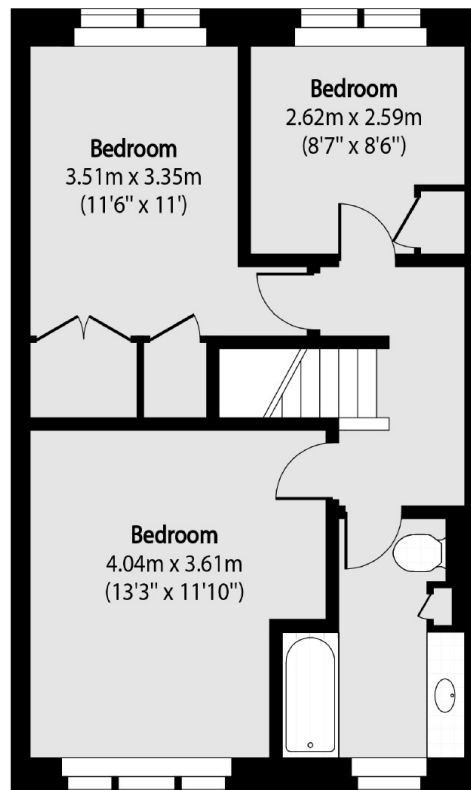
The home has been rewired and includes smart Kinetic switches.



Daubeney Road, London, E5



Ground Floor



First Floor

Total area (approx): 82.96 sq m (893 sq. ft)