



## Geldeston Road, E5

### £400,000

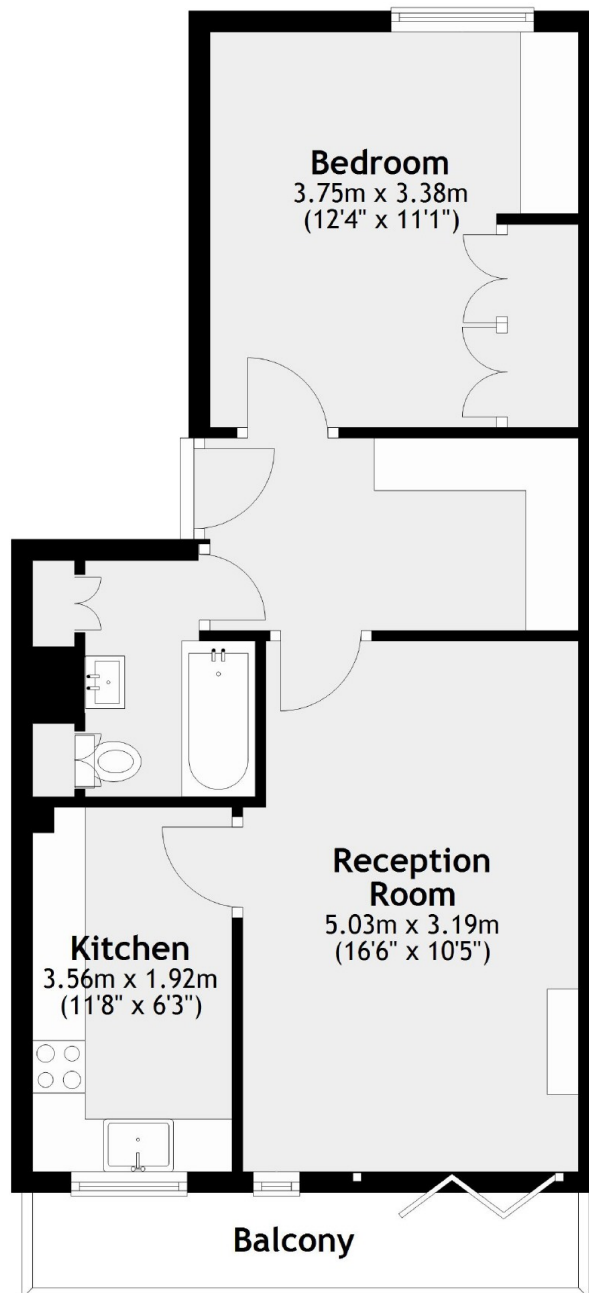
A one double bedroom apartment that has been meticulously renovated throughout by the current owner. Sitting on the top floor of a low rise block, the property benefits from a west facing balcony with glass bi-fold doors, marble flooring and bespoke kitchen, desk and storage. Gated parking is available upon request for residents.

Inglethorpe House is located on a quiet residential road less than half a mile to Clapton Overground Station, only three stops to Liverpool Street. Stoke Newington and Rectory Road Overground Stations are also just over half a mile away. The shops, cafés and restaurants on Stoke Newington Church Street and Upper Clapton Road are nearby and the green spaces of Springfield Park, Millfields and the Hackney Marshes are all within walking distance.

### Features

Offers Over  
One Double Bedroom  
Marble Finishes  
Bespoke Cabinetry  
Chain Free  
Top Floor  
West Facing Balcony

# Geldeston Road, London, E5



Total area: approx. 47.6 sq. metres (512.4 sq. feet)  
Excluding Balcony

## Dexters

Hackney Central  
331 Mare Street  
Hackney  
London  
Sales  
020 7067 2420

Energy Rating: D. We aim to make our particulars both accurate and reliable. However they are not guaranteed; nor do they form part of an offer or contract. If you require clarification on any points then please contact us, especially if you're traveling some distance to view. Please note that appliances and heating systems have not been tested and therefore no warranties can be given as to their good working order.

 **RICS** | Regulated  
Estate Agent  
and Letting Agent

[dexters.co.uk](https://www.dexters.co.uk)