



Mildenhall Road, E5

£1,600,000

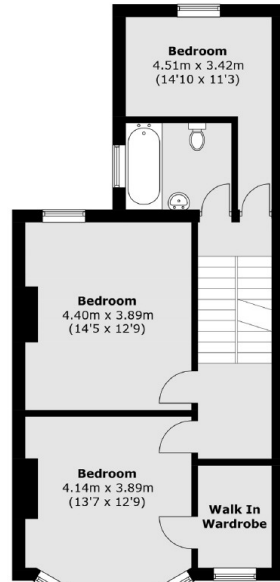
A rare to market Victorian terrace with a large private garden on one of Clapton's most desirable roads. Currently the home offers five double bedrooms, two receptions, full height basement with separate access across 2,250 sq ft. It has further renovation and extension potential and is being sold chain free.

Located on a tree-lined street, the house is half a mile from Millfields Park and the Hackney Marshes offering many opportunities for outdoor recreation. The home is situated in the catchment area of many Outstanding schools and is within walking distance to many independent shops, cafés and Sunday Market of Chatsworth Road. Clapton station is only half a mile away giving you direct access into the transport hub Liverpool Street.

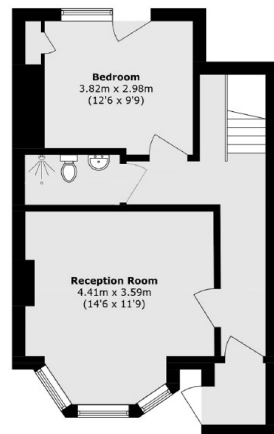
Features

- Offers Over
- Five Bedrooms
- Victorian Terrace
- Private Garden
- Basement
- Over 2,250 sq ft
- Renovation & Extension Potential
- Chain Free

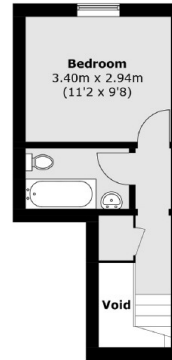
Mildenhall Road, London, E5



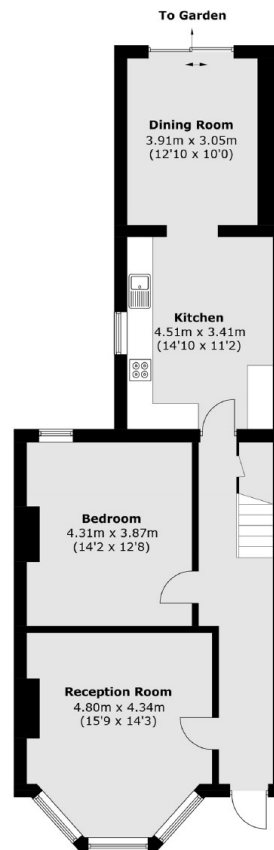
First Floor



Basement



Second Floor



Ground Floor

Total area (approx.): 209.3 sq. m (2252.9 sq. ft)
(Excluding Void & Including Basement)

Dexters

Hackney Central
331 Mare Street
Hackney
London
Sales
020 7067 2420

Energy Rating: C. We aim to make our particulars both accurate and reliable. However they are not guaranteed; nor do they form part of an offer or contract. If you require clarification on any points then please contact us, especially if you're traveling some distance to view. Please note that appliances and heating systems have not been tested and therefore no warranties can be given as to their good working order.

 **RICS** | Regulated
Estate Agent
and Letting Agent

dexters.co.uk