



Oldhill Street, N16

£400,000

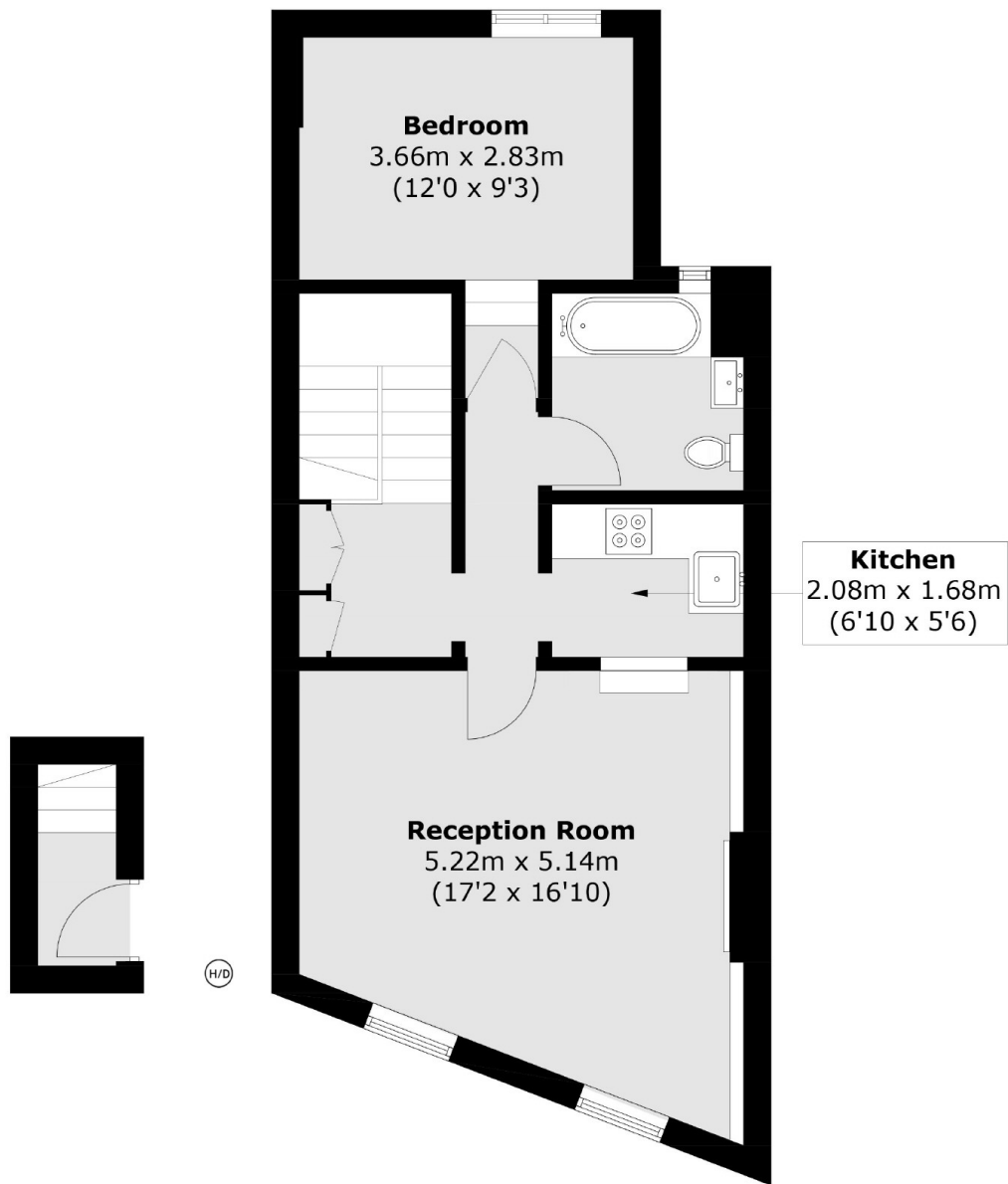
A top-floor one-bedroom period apartment located on a residential street near Stoke Newington Church Street. The property offers 572 sq ft of internal space and includes a front-facing reception room with two sash windows, stripped wooden floorboards, and a period fireplace. The kitchen is located next to the reception room and is fitted with modern appliances.

Stoke Newington Station is within walking distance, providing direct services to Liverpool Street and connections to the Victoria Line via Seven Sisters. Several bus routes operate in the area, including the 106, which links to Finsbury Park Station. Local amenities and green spaces are accessible nearby on Stoke Newington Church Street.

Features

- Top Floor
- Period features
- Modern fitted kitchen
- Breakfast Bar
- Contemporary bathroom
- Good transport links
- Stoke Newington Church Street

Oldhill Street,
London, N16



First Floor

Second Floor

Total area (approx.): 53.2 sq. m (572.6 sq. ft)

Dexters

Hackney Central
331 Mare Street
Hackney
London
Sales
020 7067 2420

Energy Rating: C. We aim to make our particulars both accurate and reliable. However they are not guaranteed; nor do they form part of an offer or contract. If you require clarification on any points then please contact us, especially if you're traveling some distance to view. Please note that appliances and heating systems have not been tested and therefore no warranties can be given as to their good working order.

RICS Regulated
Estate Agent
and Letting Agent

dexters.co.uk