



## Lower Clapton Road, E5 £500,000

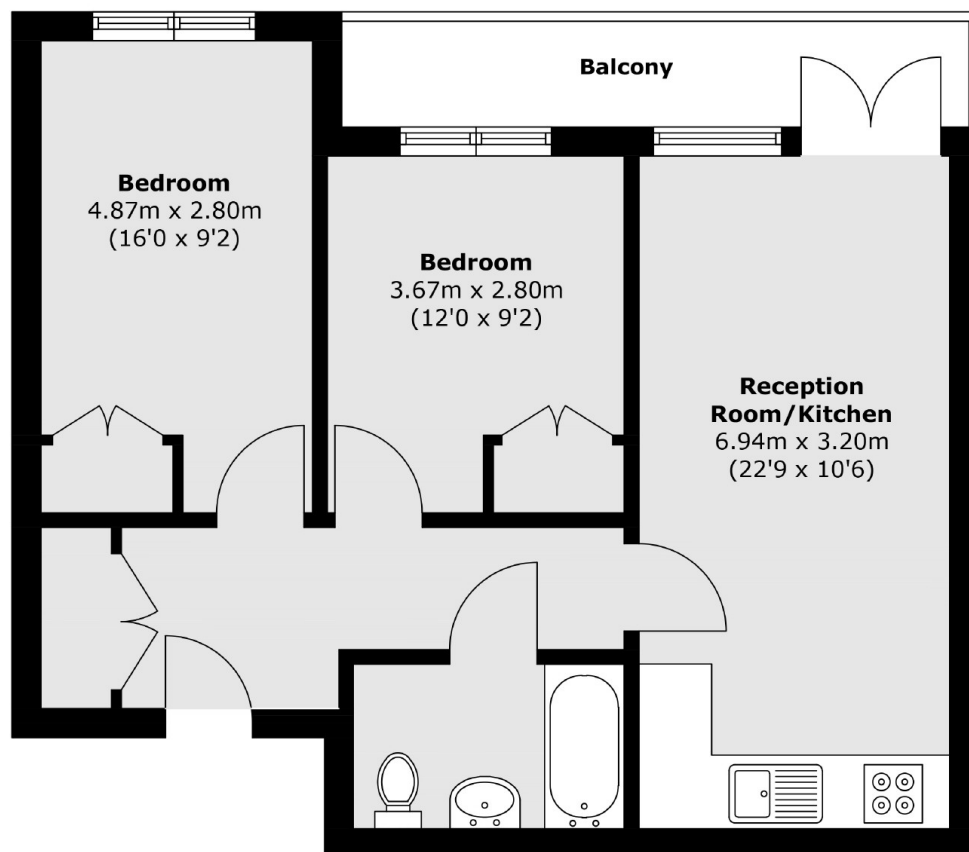
A two double bedroom apartment measuring over 690 sq ft within a purpose built development in Lower Clapton. The property has wooden floors, an open plan kitchen and living area with space to dine, family bathroom, built in storage and a large private balcony. The development offers a communal garden, solar panels and bike storage.

Alva Court is conveniently located off of Lower Clapton Road and 100 yards from the idyllic Clapton Pond. Hackney Downs Park is a quarter of a mile away and Millfields Park half a mile away offering many opportunities for outdoor recreation and the shops, cafes and restaurants of Lower Clapton Road, Mare Street and Chatsworth Road are nearby.

### Features

Offers Over  
Two Double Bedrooms  
Open Plan  
Private Balcony  
Secure Development  
Communal Garden  
Over 690sqft  
Solar Panels

# Lower Clapton Road, London, E5



Total area (approx.): 64.2 sq. m (691.0 sq. ft)

Balcony area (approx.): 7.4 sq. m (79.6 sq. ft)