



## Big Hill, E5

### £350,000

A one bedroom apartment measuring over 590 sq ft with views of Hackney Marshes. This property is in very good condition throughout; offers open plan living with wooden flooring, modern bathroom, spacious bedroom with built in storage and is being sold chain free.

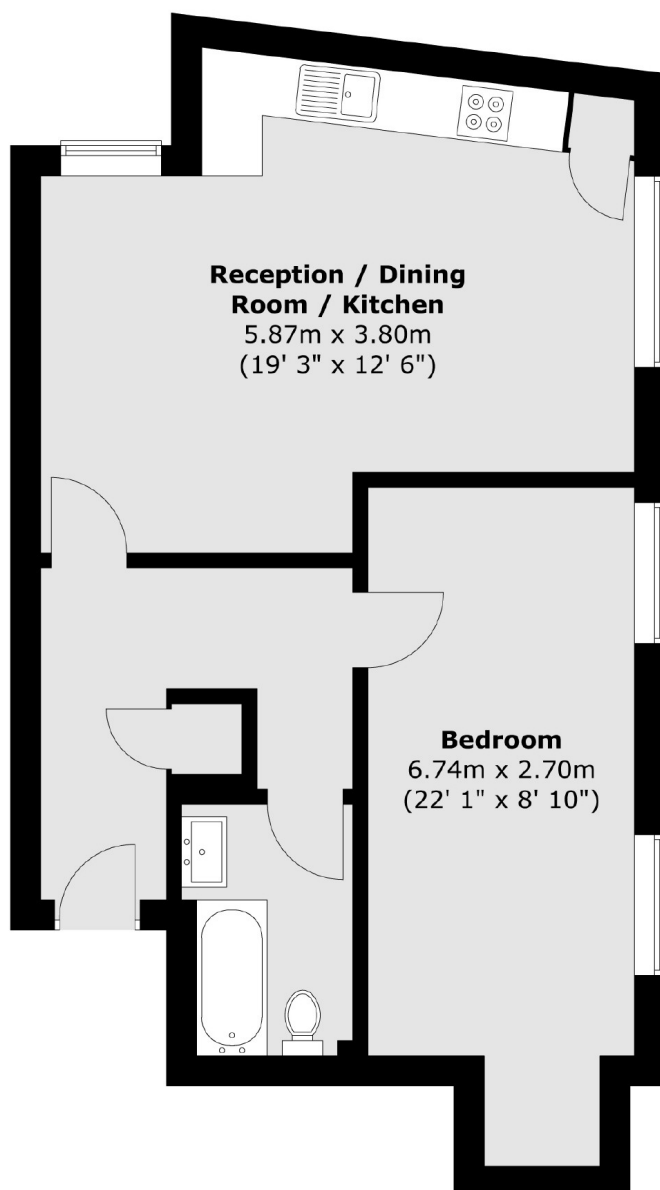
This property is located next to both Springfield Park and the Hackney Marshes offering many opportunities for outdoor recreation. Clapton Overground Station is only half a mile away giving you easy access to Liverpool Street and the Elizabeth Line.

### Features

- One Double Bedroom
- Purpose Built Block
- Over 590 sq ft
- Chain Free
- Wooden Floors
- Hackney Marshes

# Big Hill, London, E5

## First Floor



Total area (approx.) : 55 sq. m (592 sq. ft)

# Dexters

Hackney Central  
331 Mare Street  
Hackney  
London  
Sales  
020 7067 2420

Energy Rating: C. We aim to make our particulars both accurate and reliable. However they are not guaranteed; nor do they form part of an offer or contract. If you require clarification on any points then please contact us, especially if you're traveling some distance to view. Please note that appliances and heating systems have not been tested and therefore no warranties can be given as to their good working order.

 **RICS** | Regulated  
Estate Agent  
and Letting Agent

[dexters.co.uk](https://www.dexters.co.uk)