



Clapton Common, E5

£585,000

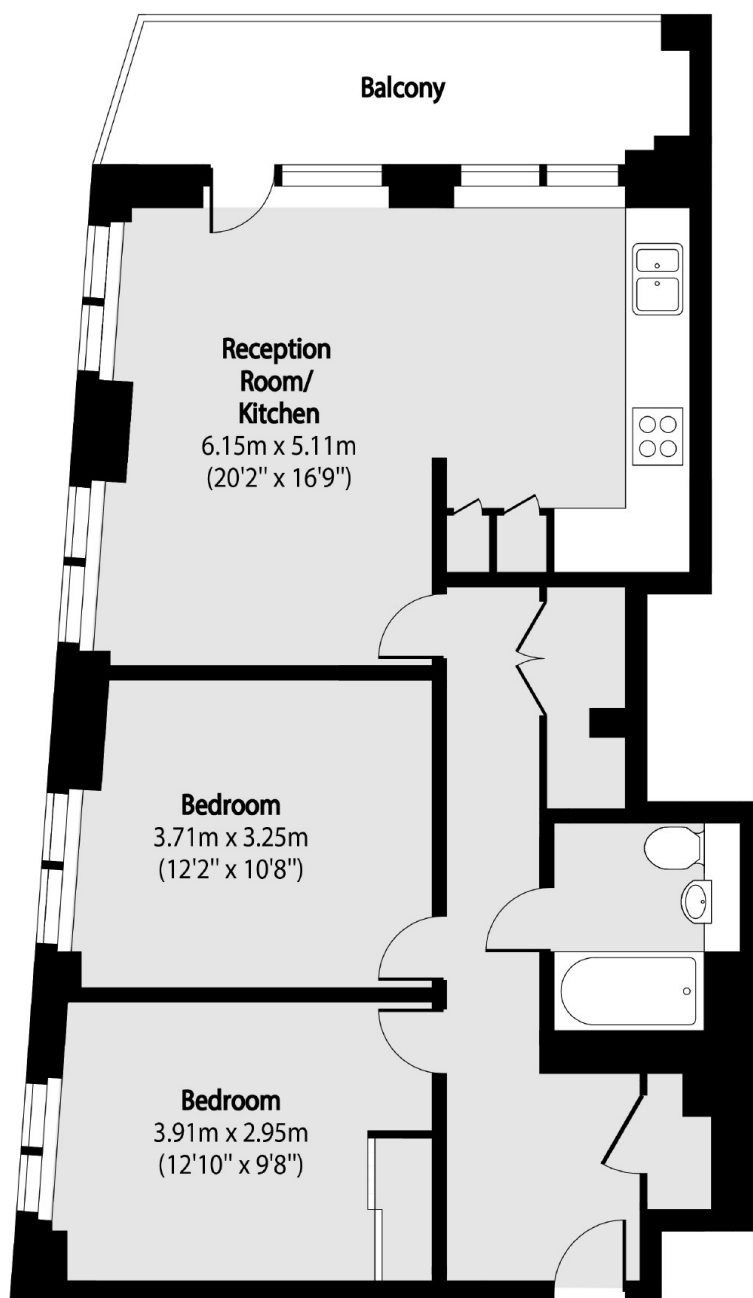
A top floor, two double bedroom apartment set within a modern, award-winning development completed in 2021. The property benefits from a 5 meter private terrace overlooking the common with far reaching city and green views, complete with an open plan kitchen featuring floor to ceiling windows. Designed with an Eruv and features Shabbat compliant lifts and entry systems.

Situated under half a mile to Stamford Hill Overground Station (15 minutes from Liverpool Street), the property is within walking distance to scenic green spaces surrounding the River Lea, and recreational facilities including tennis courts in Springfield Park, Lea Rowing Club and Lee Valley Ice Center.

Features

Offers Over
Two Double Bedrooms
South Facing Terrace
City & Skyline Views
Secure Bike Storage
Modern Development
Lift Access

Clapton Common, London, E5



Total area (approx): 72.83 sq m (784 sq. ft)

Balcony total area (approx): 8.91 sq m (96 sq. ft)

Dexters

Hackney Central
331 Mare Street
Hackney
London
Sales
020 7067 2420

Energy Rating: . We aim to make our particulars both accurate and reliable. However they are not guaranteed; nor do they form part of an offer or contract. If you require clarification on any points then please contact us, especially if you're traveling some distance to view. Please note that appliances and heating systems have not been tested and therefore no warranties can be given as to their good working order.

 **RICS** | Regulated
Estate Agent
and Letting Agent

dexters.co.uk