



## Seal Street, E8

### £950,000

Offers in Excess of £950,000. This Seal street property is a three bedroom Victorian end of terrace in the Shacklewell Green conservation area. The property has been refurbished throughout with modern bathroom & kitchen, double reception room with wooden flooring, boarded loft and large private garden.

Ideally located within walking distance to the authentic Ridley Road and the many roof top bars, restaurants & independent shops surrounding Dalston high street. Hackney Downs Park and its tennis courts is less than half a mile away. Transport links include Dalston Kingsland, Dalston Junction as well as Rectory Road Overground half a mile away offering direct trains into Liverpool Street.

### Features

Offers in Excess of  
Victorian End of Terrace  
Three Bedrooms  
Recently Refurbished  
Approved Planning Permission  
Conservation Area  
Chain Free





## Seal Street, E8

Built in 1884 these late Victorian houses are of special historic interest and offer quaint and peaceful living in close proximity to vibrant Dalston.

The ground floor comprises of a bright double reception/dining room with feature fireplace, kitchen with dark cabinetry and double doors opening up into the garden.

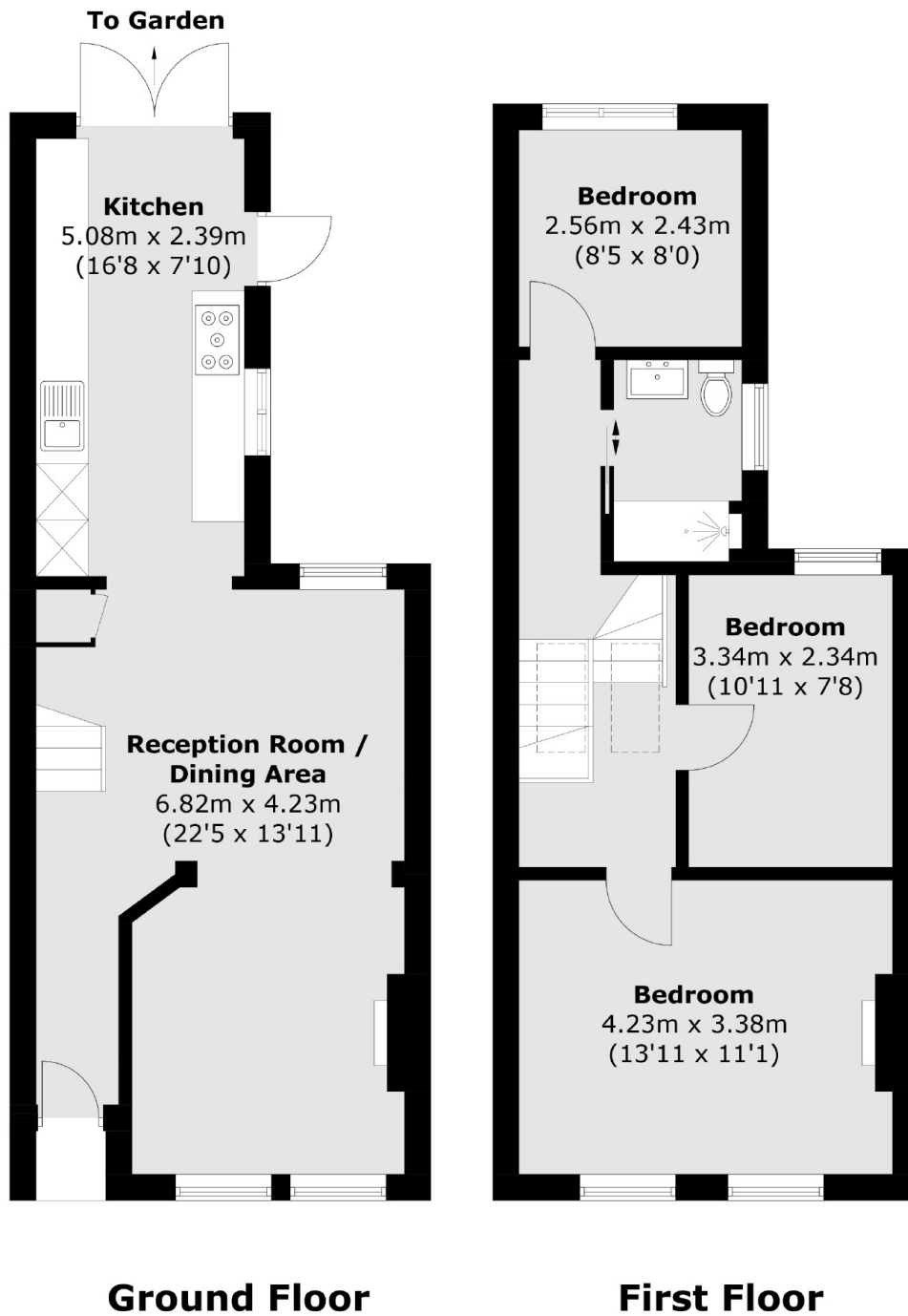
The first floor consists of the principle bedroom with feature fireplace, two double bedrooms and a family bathroom. The ceiling height has been lifted and Velux windows installed flooding the staircase and hallway with natural light. There is a step ladder into the boarded and insulated loft ideal for storage.

Approved planning permission - Hackney planning ref number 2021/3653.





# Seal Street, London, E8



Total area (approx.): 83.0 sq. m (893.3 sq. ft)

## Dexters

Hackney Central  
331 Mare Street  
Hackney  
London  
Sales  
020 7067 2420

Energy Rating: D. We aim to make our particulars both accurate and reliable. However they are not guaranteed; nor do they form part of an offer or contract. If you require clarification on any points then please contact us, especially if you're traveling some distance to view. Please note that appliances and heating systems have not been tested and therefore no warranties can be given as to their good working order.

 **RICS** | Regulated  
Estate Agent  
and Letting Agent

dexters.co.uk