



Fawcett Estate, E5

£480,000

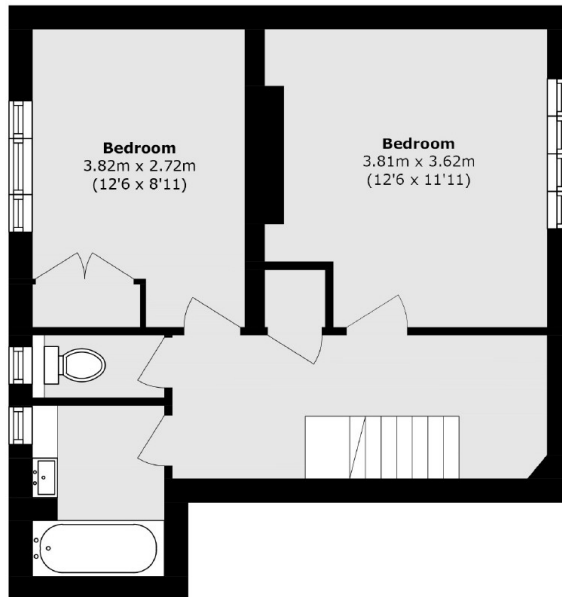
A two bedroom split level flat, measuring over 845 sq ft, located within a purpose built block in Upper Clapton. The property has been recently renovated by its current owners. Situated on the first floor the property benefits from a large kitchen with room to dine, family bathroom and separate utility/office area.

The property is located in the middle of the popular green spaces of Springfield Park and Walthamstow Marshes. In addition to there being numerous bus links close by as well as Clapton Overground within walking distance offering direct trains into Liverpool Street.

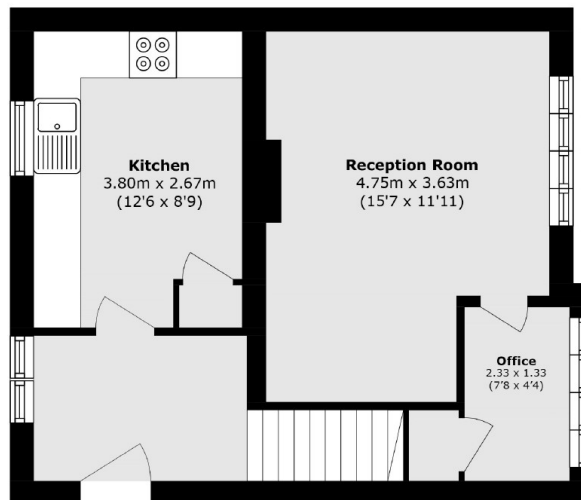
Features

- Offers Over
- Two Double Bedrooms
- Split Level
- Over 845 sqft
- Secure Entry
- Communal Gardens
- Springfield Park
- Recently Renovated
- Ample Storage

Fawcett Estate, London, E5



Second Floor



First Floor

Total area (approx.): 78.6 sq. m (846.0 sq. ft)