



## Sylvester Path, E8

### £400,000

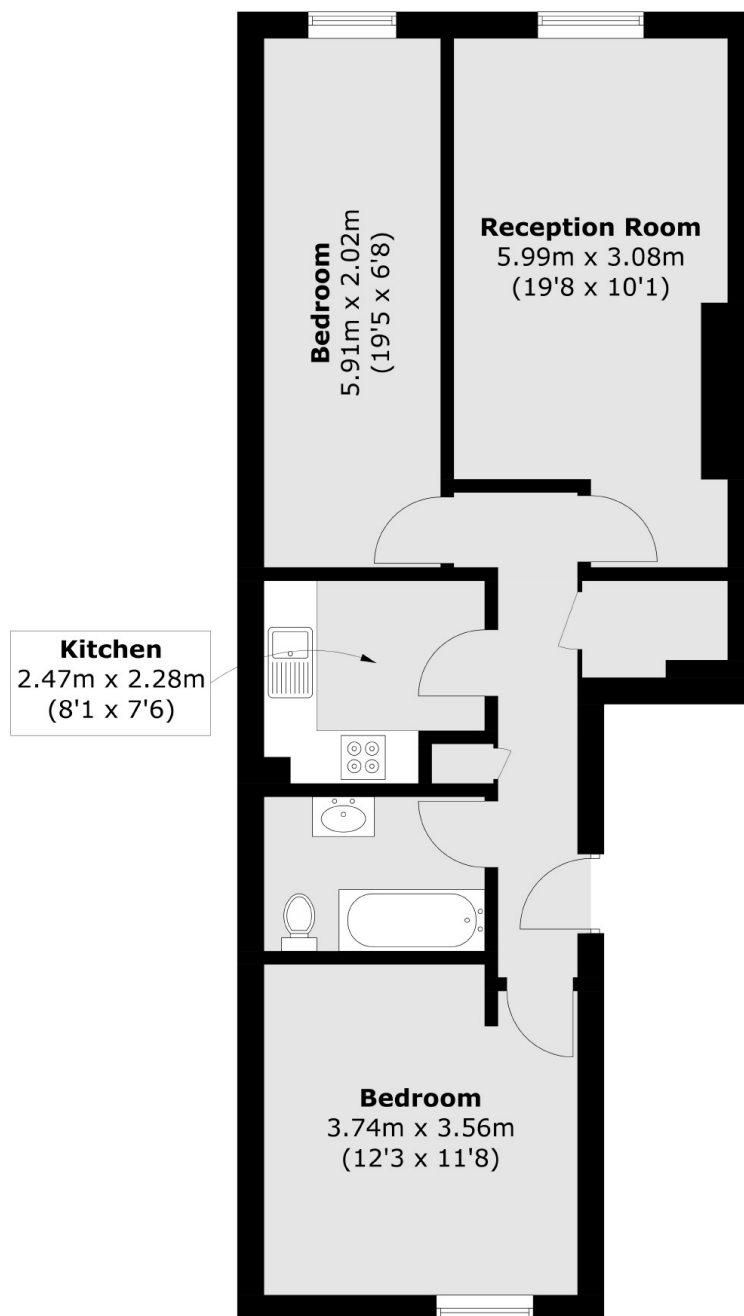
A two double bedroom period conversion on the cobblestone street Sylvester Path in the heart of Hackney. The property has been recently refurbished throughout and benefits from high ceilings, separate kitchen, sash windows and being sold chain free with a new lease length.

Sylvester Path is a pedestrian only street 150 yards from Hackney Central and Hackney Downs Overground Stations offering excellent transport links across the City. There is a variety of high street shops, cafes and restaurants on your doorstep and the famous Hackney Empire and Town Hall are only 100 yards. London Fields Park & Lido and weekend market are also half a mile away.

### Features

- Cash Only!
- Newly Refurbished
- London Fields
- Period Conversion
- Separate Kitchen
- Chain Free

# Sylvester Path, London, E8



Total area (approx.): 63.0 sq. m (678.1 sq. ft)