



Amhurst Road, E8

£550,000

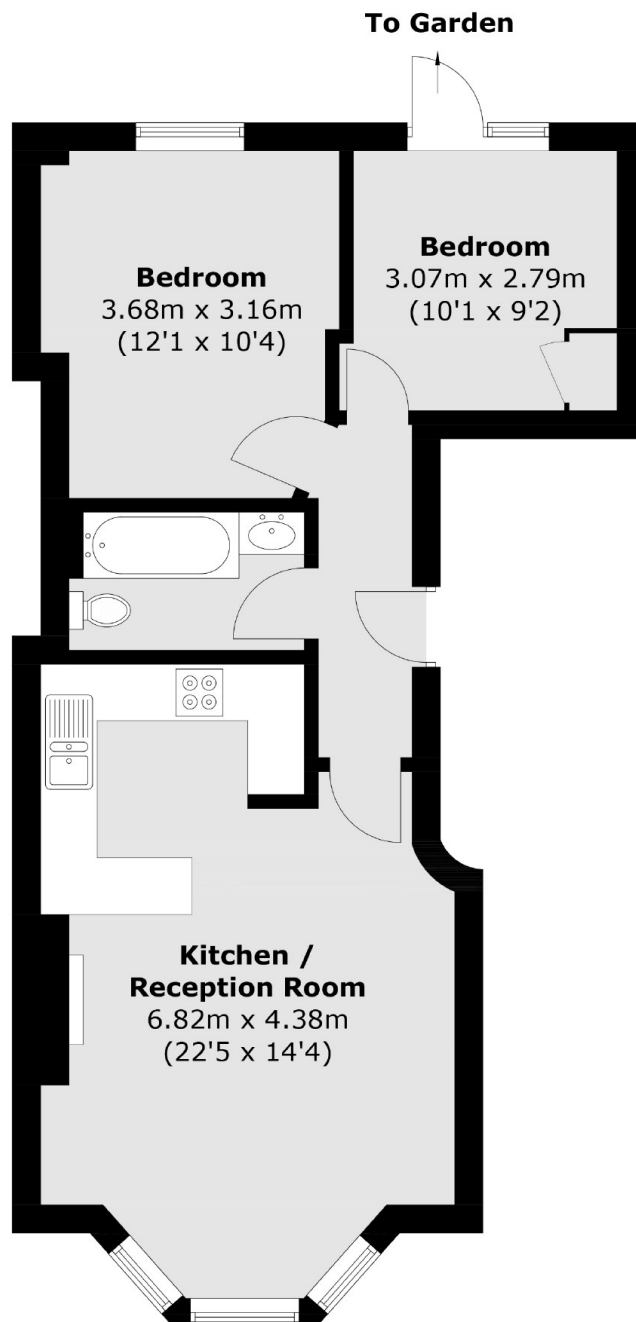
A two double bedroom period conversion in the heart of Hackney with a large private garden. The property has an open plan kitchen living room with sash bay window, high ceilings, and two double bedrooms with access to the garden. It is being sold with no onward chain and a Share of the Freehold.

Less than a mile away from London Fields with its famous market and Lido, the property is surrounded by boutique bars, cafés and restaurants. There are convenient transport links into the City from Hackney Downs; under a quarter of a mile away, and Hackney Central; half a mile away.

Features

- Two Double Bedrooms
- Victorian Terrace
- Private Garden
- Sash Windows
- Share of Freehold
- Hackney Downs Overground
- No Onward Chain

Amhurst Road, London, E8



Total area (approx.): 52.9 sq. m (569.4 sq. ft)