



Daubeney Road, E5

£1,000,000

A modern four bedroom end of terrace with a large West Facing garden in Lower Clapton. Measuring just under 1,300 sq ft across three storey's, this energy efficient home has solar panels, insulation, double glazed windows and a rear glass ceiling & bi-fold doors flooding the living room with natural light.

The house is moments from vibrant Chatsworth Road as well as the green spaces of Millfields Park, Hackney Marshes and the River Lea offering many opportunities for outdoor recreation. Homerton Overground is half a mile away only two stops into Stratford and Stratford International for numerous transport connections. The property is also within the catchment area of many Ofsted outstanding primary & secondary schools.

Features

Offers Over
Modern Freehold
End of Terrace
Four Double Bedrooms
Two Bathrooms
West Facing Garden
Chatsworth Road
Solar Panels



Daubeney Road, E5

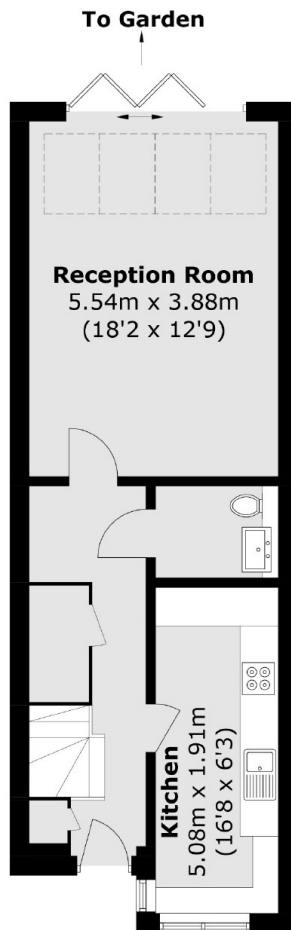
Built in 2013 these terrace homes offer the comforts of modern living in a desirable and residential location.

Behind a bright pink door the ground floor consists of a separate kitchen with built in appliances, separate W/C and spacious dining and living area with an impressive glass ceiling and bi-fold doors that open onto to the private garden. There is potential to build a garden studio as other neighbours have done and you also have side access to the garden from the front of the house.

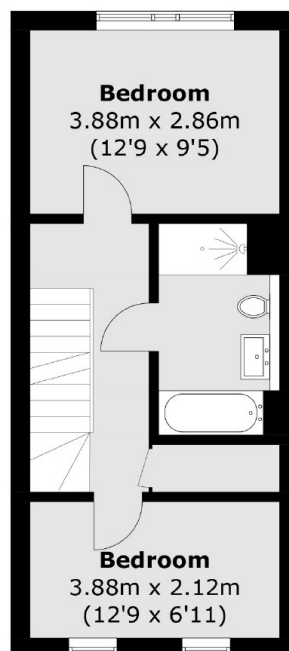
On the first floor are two double bedrooms, family bathroom with separate shower & bathtub and on the top floor are a further two double bedrooms, one with en-suite.



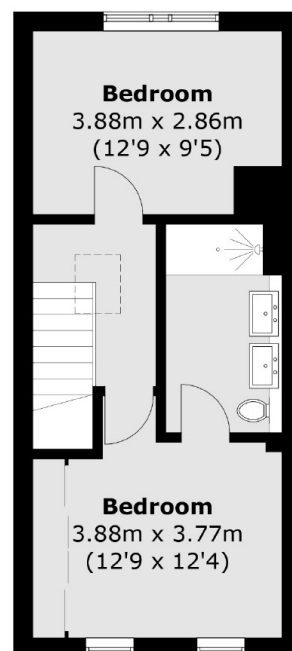
Daubeney Road, London, E5



Ground Floor



First Floor



Second Floor

Total area (approx.): 120.1 sq. m (1292.7 sq. ft)