



Brett Road, E8

£475,000

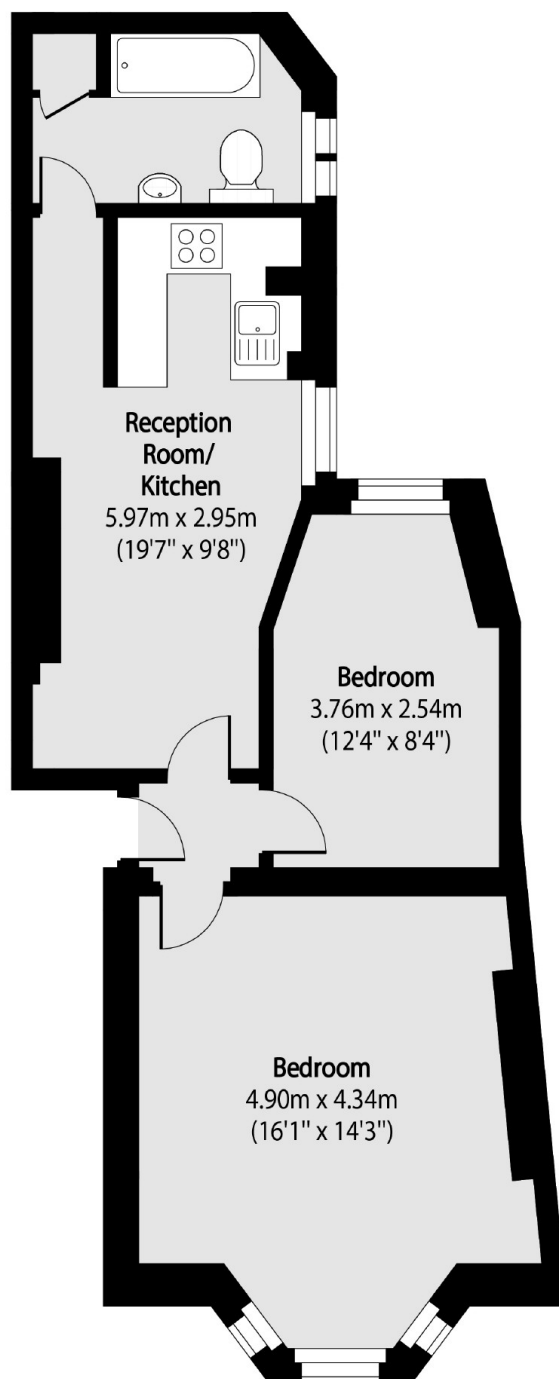
A two double bedroom flat within a Victorian mansion-style block. The property has been renovated throughout by its current owner and has parquet style flooring, open plan U-shaped kitchen and sash windows. This property is on a quiet road just behind the hustle and bustle of Hackney Central and is offered chain free.

Quested Court is located 500 ft from Hackney Central Station with direct access to Stratford and links to Liverpool Street Station via Hackney Downs. The many local bars, restaurants and high street shops are on your doorstep.

Features

- Offers Over
- Two Double Bedrooms
- Open Plan
- Victorian
- Bay Window
- Close To Amenities
- Chain Free

Brett Road, London, E8



Total area (approx): 51.65 sq m (556 sq. ft)

Dexters

Hackney Central
331 Mare Street
Hackney
London
Sales
020 7067 2420

Energy Rating: . We aim to make our particulars both accurate and reliable. However they are not guaranteed; nor do they form part of an offer or contract. If you require clarification on any points then please contact us, especially if you're traveling some distance to view. Please note that appliances and heating systems have not been tested and therefore no warranties can be given as to their good working order.

 **RICS** | Regulated
Estate Agent
and Letting Agent

[dexters.co.uk](https://www.dexters.co.uk)