



Graham Road, E8

£450,000

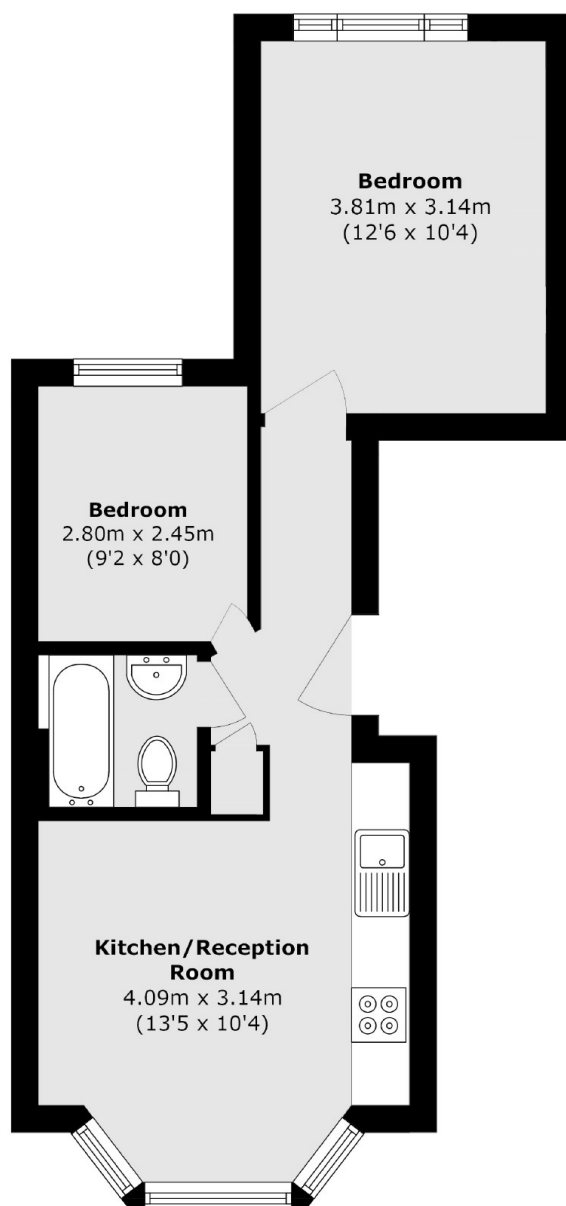
A two double bedroom period conversion in the heart of Hackney. The property has been renovated by the current owners and has an open plan kitchen living area, bay window, high ceilings and family bathroom.

Graham Road runs between Dalston and Mare Street with many shops, cafes and amenities to choose from including Broadway Market and its famous weekend market. It is half a mile from London Fields and its tennis courts and Lido. Hackney Central & Hackney Downs Overground Stations are under a quarter of a mile away.

Features

- Two Double Bedrooms
- Period Conversion
- Chain Free
- Open Plan
- Recently Renovated
- London Fields

Graham Road, London, E8



Total area (approx.): 42.6 sq. m (458.5 sq. ft)